

**JARINGAN TANPA HARD DISK  
DENGAN  
WINDOWS 2003 DAN THINSTATION**



**OLEH  
IWAN SETIAWAN**

**KEDIRI  
2008**

## Daftar Isi

Pendahuluan.....	1
Prosedur booting thin client :.....	1
Perlengkapan yang dibutuhkan.....	1
Instalasi Windows 2003 Server.....	2
Download THINSTATION.....	10
Install DHCP, TFTP dan Terminal Server.....	13
Setting DHCP Server.....	18
Setting TFTP Server.....	23
Setting THINSTATION.....	24
Add User.....	26
Setting Local Security Policy.....	31
Booting dari Disket dan CDROM.....	33
Konfigurasi THINSTATION.....	37
mengaktifkan Sound dan USB Client.....	37
Mengganti resolusi monitor Client.....	39
User auto Login.....	39
Tampilan XP.....	41
Mengontrol User.....	43
Mempercepat Booting THINSTATION.....	47
Penutup.....	61
Referensi.....	61

## Pendahuluan

Thinstation adalah open source “thin client” operating system dan beberapa program yang memungkinkan komputer client terhubung ke server melalui jaringan. Thinstation dibuat berdasarkan linux, tapi user mungkin tidak akan melihat linux sama sekali jika dihubungkan secara langsung dengan Microsoft Windows Server! User akan merasa terhubung langsung dengan server. Thinstation juga mendukung MS Windows-only enviroment dan tidak membutuhkan pengetahuan Unix/Linux. Ini yang akan dijelaskan dalam tutorial ini. Thinstation tidak memerlukan memory internal ( hd, cdrom, floppy drive hanya dibutuhkan saat booting, tapi dapat digantikan dengan boot ROM yang terdapat pada kartu jaringan), karena semua yang dibutuhkan (boot image) akan di ambil dari jaringan dan disimpan di RAM.

### Prosedur booting thin client :

- Booting menggunakan floppy disk atau Network card.
- Mencari DHCP server dari jaringan untuk mendapatkan :
  - IP address untuk thin client sendiri.
  - IP address dari TFTP server untuk download boot image.
  - Nama dari boot image.
- Download boot image dari TFTP server .
- Download konfigurasi file.
- Memulai Terminal Server.

### Perlengkapan yang dibutuhkan.

Windows 2003 server disisi server dengan specifikasi yang mumpuni. Procesor 1,5+ GHz memori 512 MB + 64 MB per Client.

### Komputer client dengan spesifikasi :

- Processor x86
- RAM : 16 MB. 32 MB recommended.
- Network : 10/100 mbps network card + boot ROM dengan standart PXE untuk booting tanpa disket.
- Mouse : Serial, PS/2, USB.

# Instalasi Windows 2003 Server

Boot komputer dari CDROM dengan CD instalasi Windows 2003

Klik ENTER untuk melanjutkan

```
Windows Server 2003, Enterprise Edition Setup

Welcome to Setup.

This portion of the Setup program prepares Microsoft(R)
Windows(R) to run on your computer.

• To set up Windows now, press ENTER.
• To repair a Windows installation using
  Recovery Console, press R.
• To quit Setup without installing Windows, press F3.

ENTER=Continue R=Repair F3=Quit
```

Klik F8

```
Windows Licensing Agreement

END-USER LICENSE AGREEMENT FOR MICROSOFT
SOFTWARE

MICROSOFT WINDOWS SERVER 2003, STANDARD
EDITION WITH SERVICE PACK 1

MICROSOFT WINDOWS SERVER 2003, ENTERPRISE
EDITION WITH SERVICE PACK 1

MICROSOFT WINDOWS SERVER 2003, STANDARD x64
EDITION

MICROSOFT WINDOWS SERVER 2003, ENTERPRISE
x64 EDITION

PLEASE READ THIS END-USER LICENSE AGREEMENT
<'EULA'> CAREFULLY. BY INSTALLING OR USING
THE SOFTWARE THAT ACCOMPANIES THIS EULA
<'SOFTWARE'>, YOU AGREE TO THE TERMS OF THIS
EULA. IF YOU DO NOT AGREE, DO NOT USE THE
SOFTWARE AND, IF APPLICABLE, RETURN IT TO THE
PLACE OF PURCHASE FOR A FULL REFUND.

1. GENERAL. This EULA is a legal agreement
between you (either an individual or a single
entity) and Microsoft Corporation
(<'Microsoft'>). This EULA governs the Software,

F8=I agree ESC=I do not agree PAGE DOWN=Next Page
```

Klik ENTER untuk menggunakan seluruh space harddisk atau anda dapat membuat partisi terlebih dahulu

```
Windows Server 2003, Enterprise Edition Setup

The following list shows the existing partitions and
unpartitioned space on this computer.

Use the UP and DOWN ARROW keys to select an item in the list.

• To set up Windows on the selected item, press ENTER.
• To create a partition in the unpartitioned space, press C.
• To delete the selected partition, press D.

10237 MB Disk 0 at Id 0 on bus 0 on atapi [MBR]
  Unpartitioned space          10237 MB

ENTER=Install  C=Create Partition  F3=Quit
```

Format partisi dengan NTFS file system

```
Windows Server 2003, Enterprise Edition Setup

A new partition for Windows has been created on
10237 MB Disk 0 at Id 0 on bus 0 on atapi [MBR].

This partition must now be formatted.

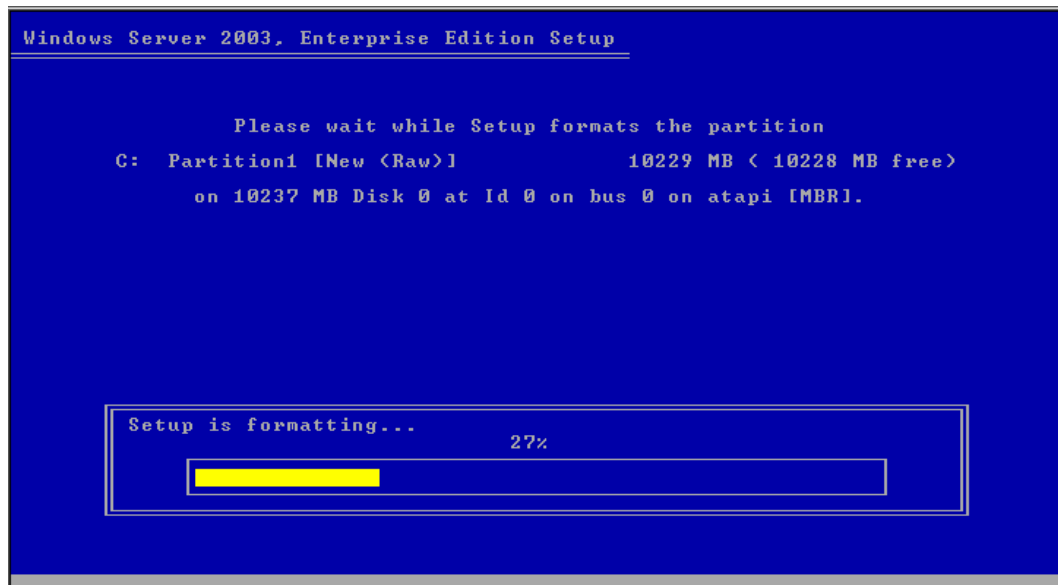
From the list below, select a file system for the new partition.
Use the UP and DOWN ARROW keys to select the file system you want,
and then press ENTER.

If you want to select a different partition for Windows,
press ESC.

Format the partition using the NTFS file system (Quick)
Format the partition using the FAT file system (Quick)
Format the partition using the NTFS file system
Format the partition using the FAT file system

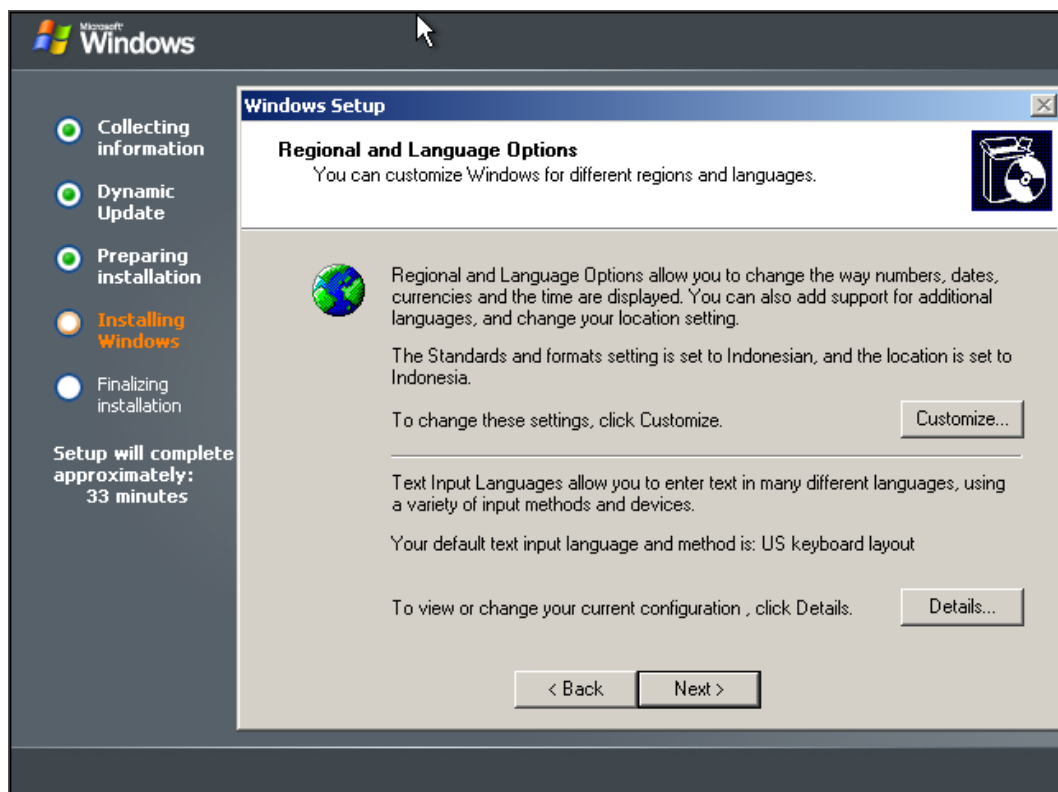
ENTER=Continue  ESC=Cancel
```

## Proses Installsi

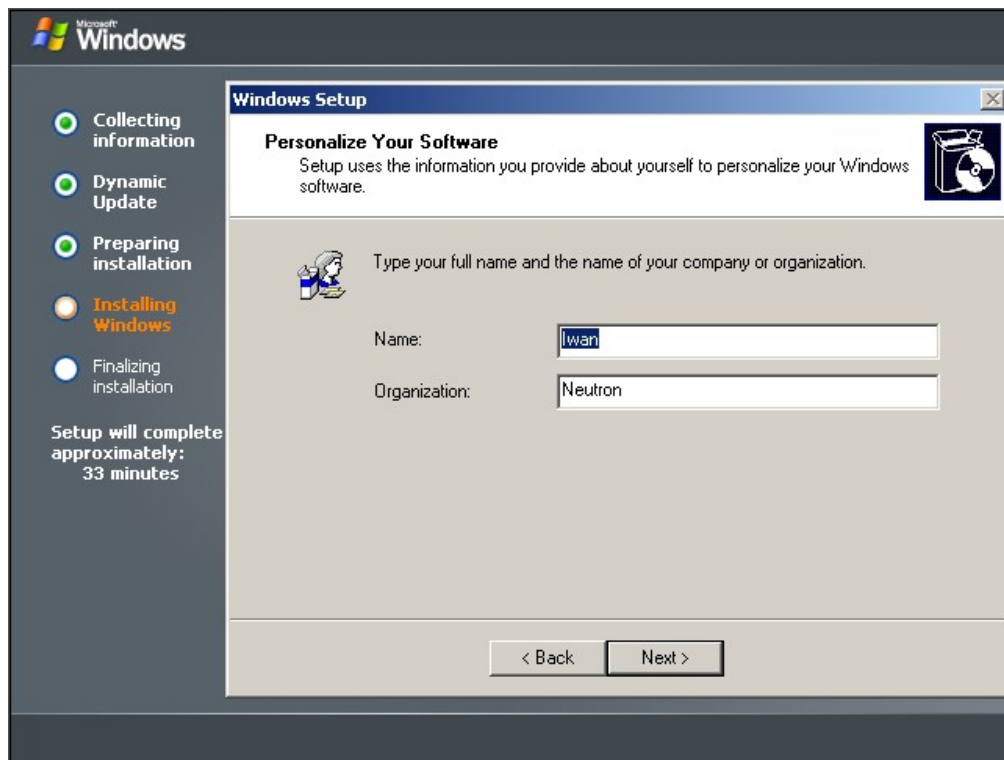


Untuk mengganti Regional dan opsi Bahasa klik Customize..

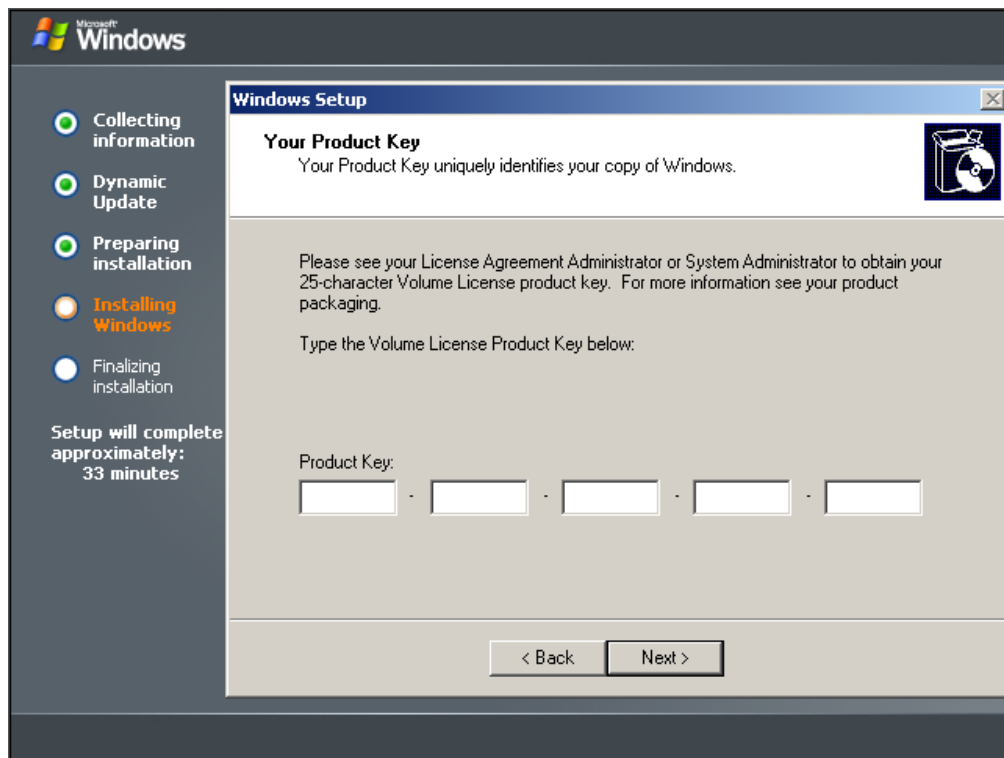
Kemudian klik Next



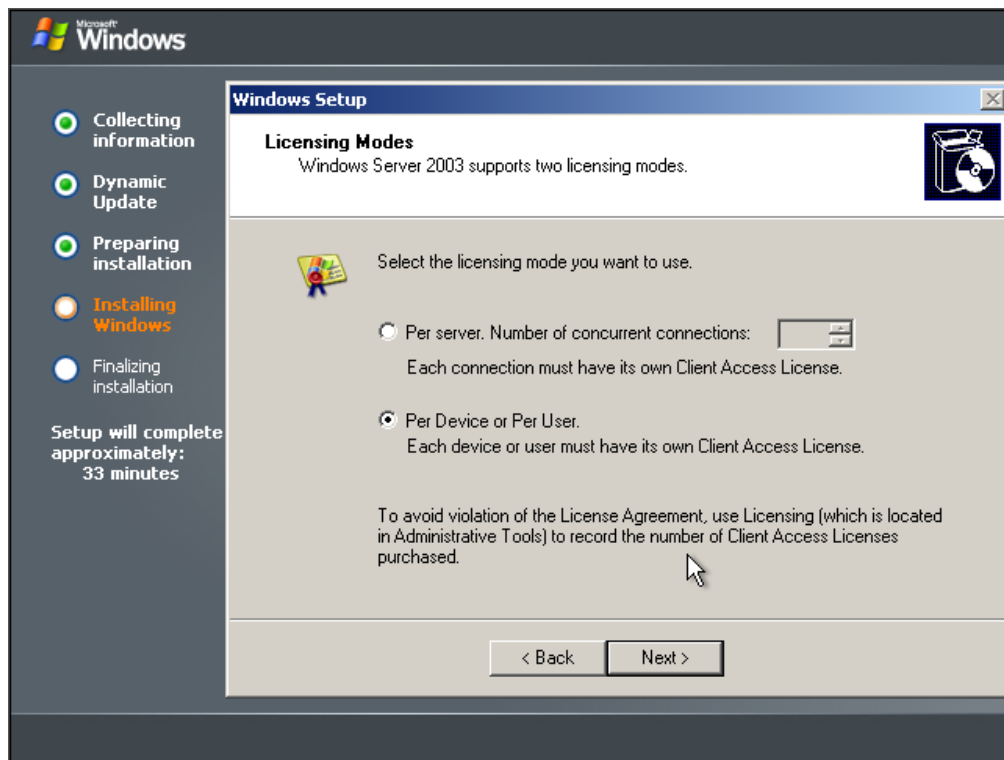
## Isikan Name dan Organization



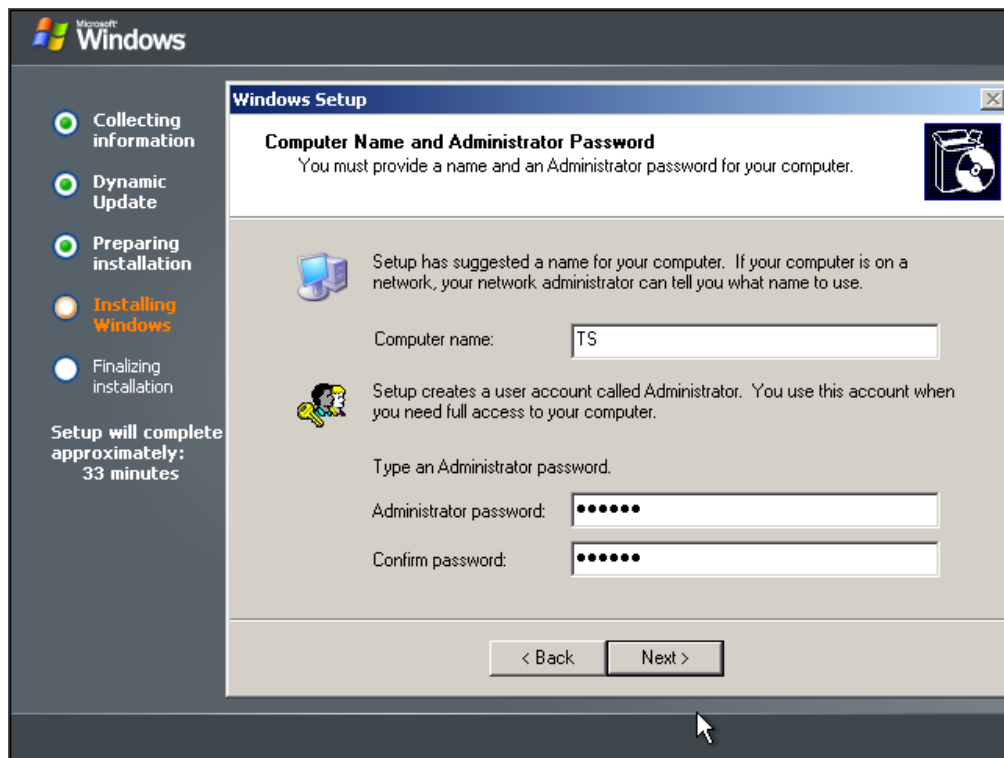
## Masukkan Nomor seri Windows 2003



## Pilih Per Device or Per User

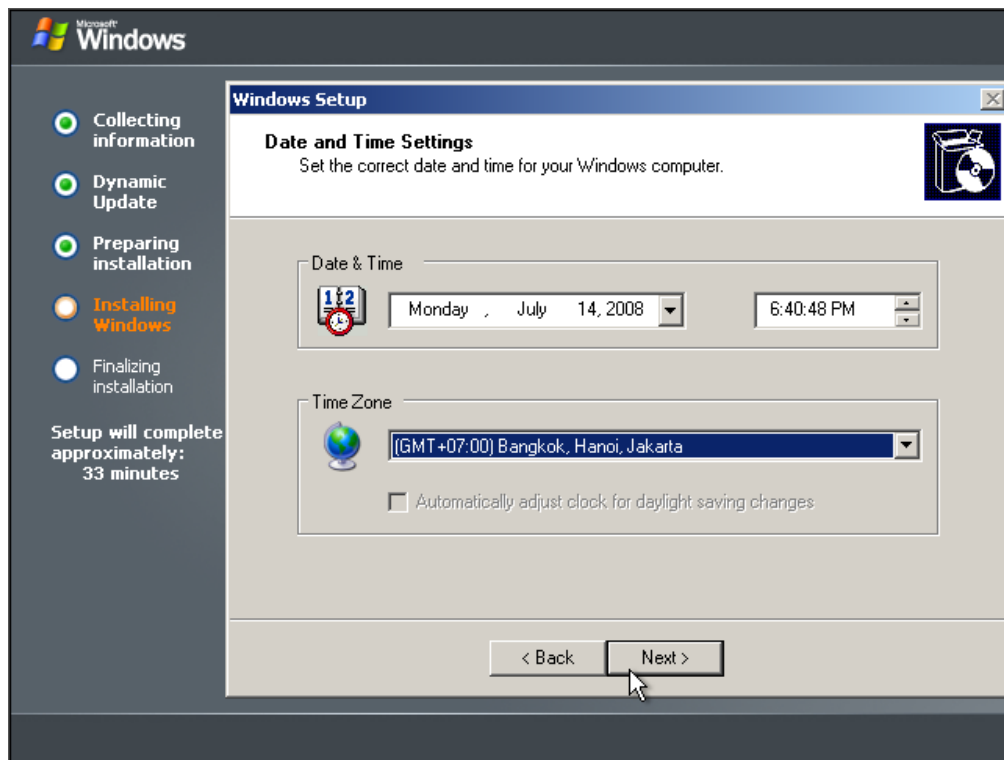


## Isi Computer name dan administrator password

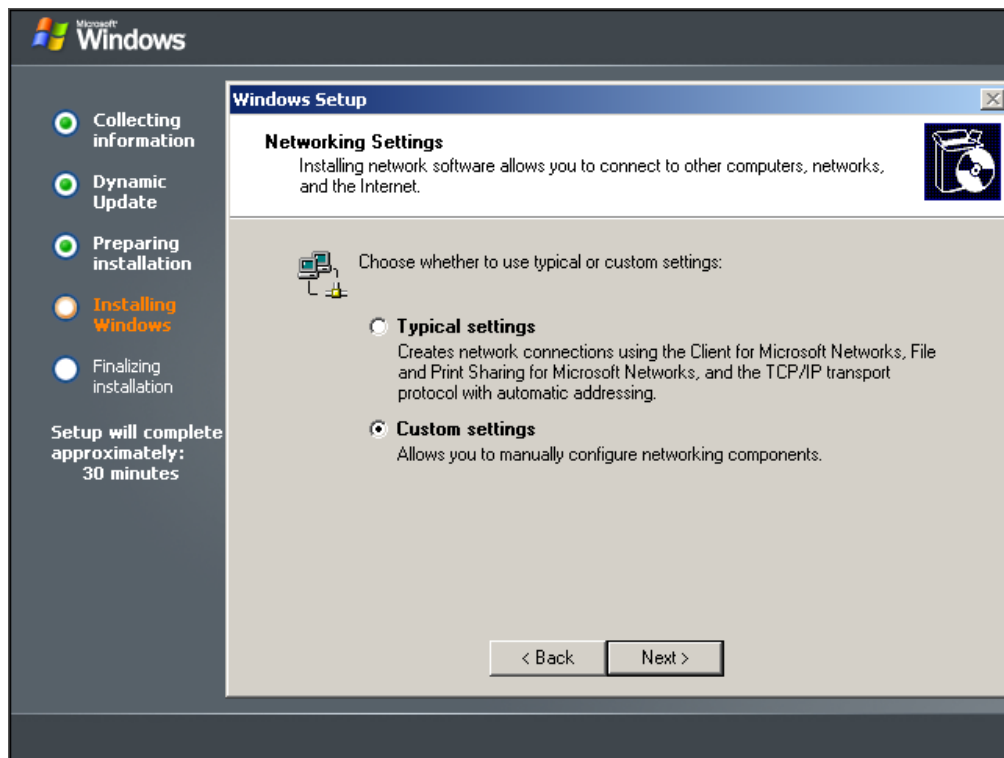




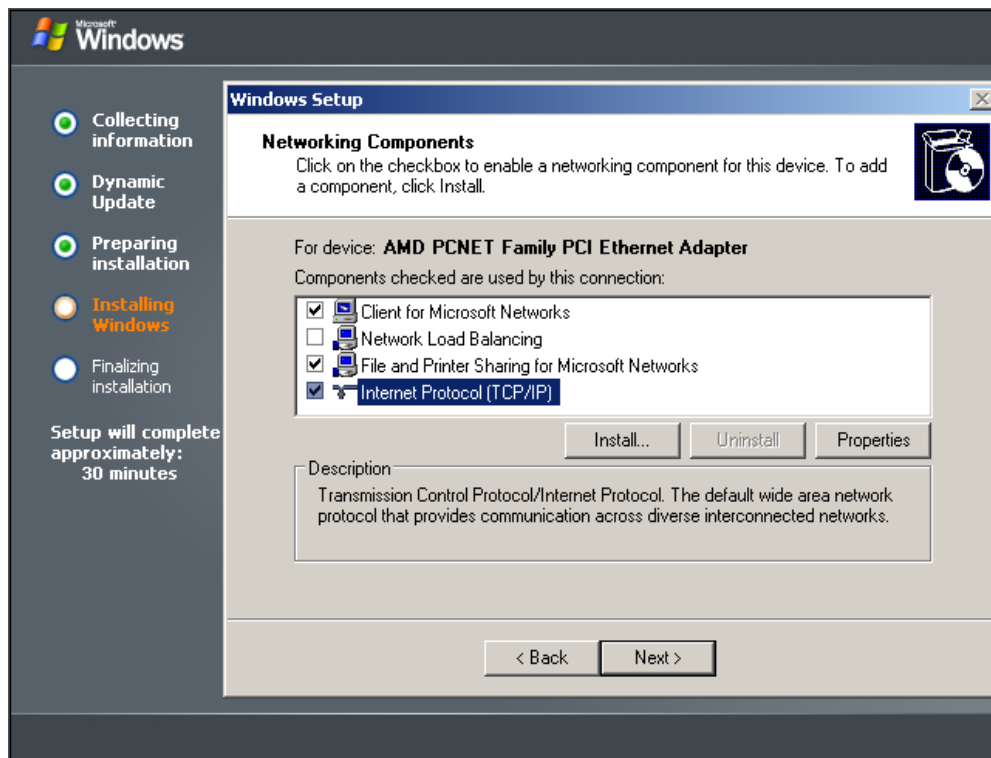
## Pilih Time Zone



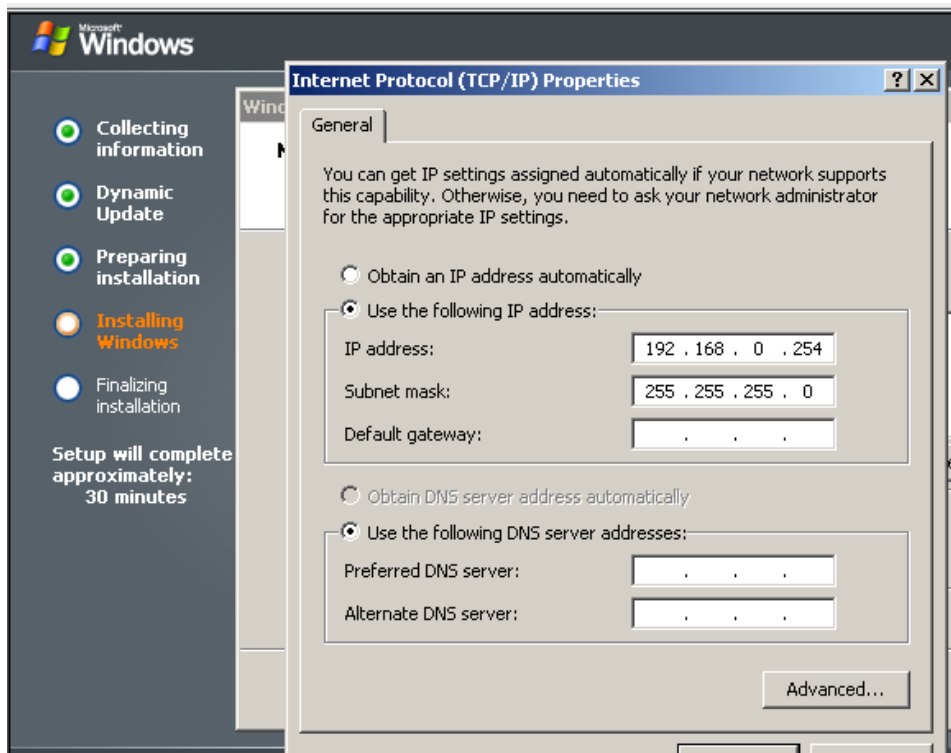
## Pilih Custom settings



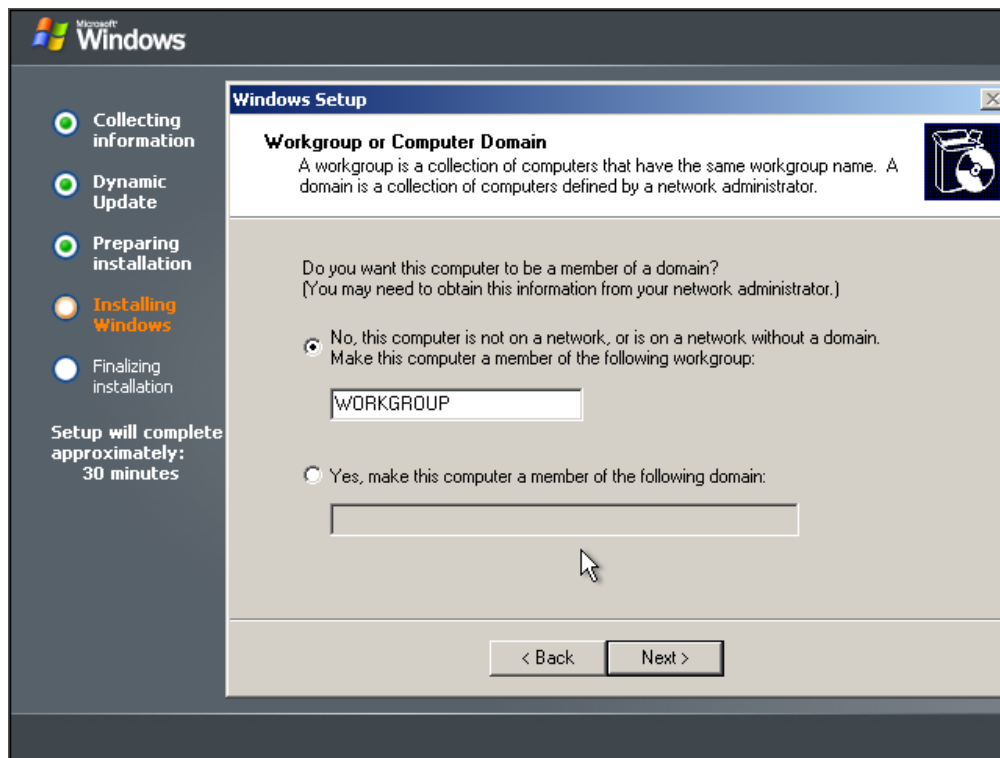
Klik Internet Protocol (TCP/IP) kemudian klik Properties



Isi IP address dan Subnet mask, klik OK kemudian Next



Klik Next



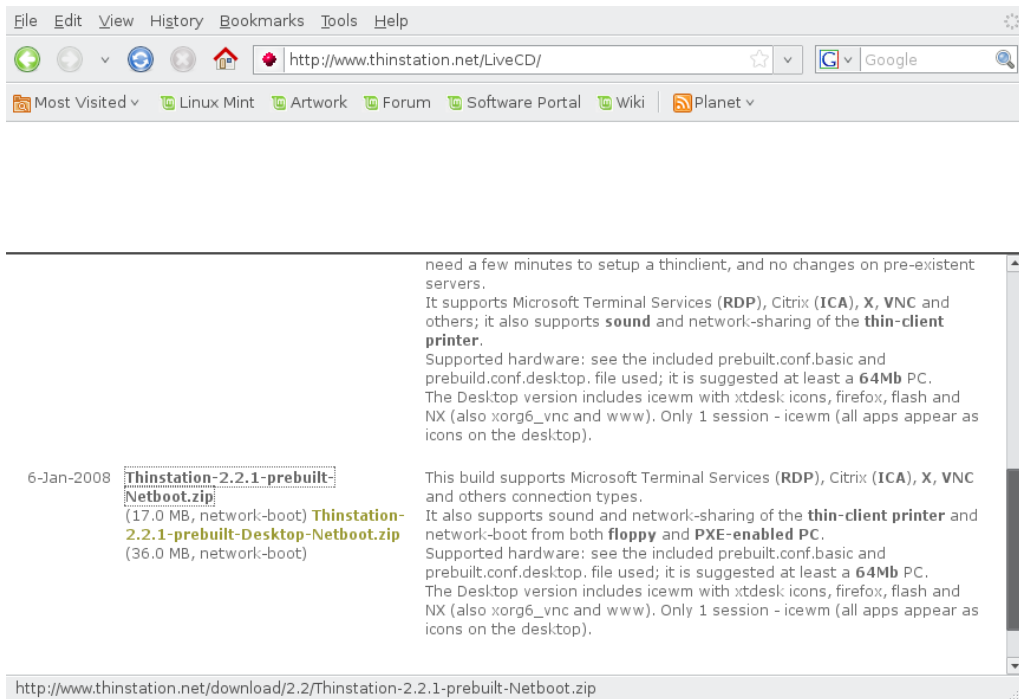
Klik Next, Instalasi selesai. Setelah reboot akan tampil dialog Ctrl-Alt-Del seperti dibawah ini



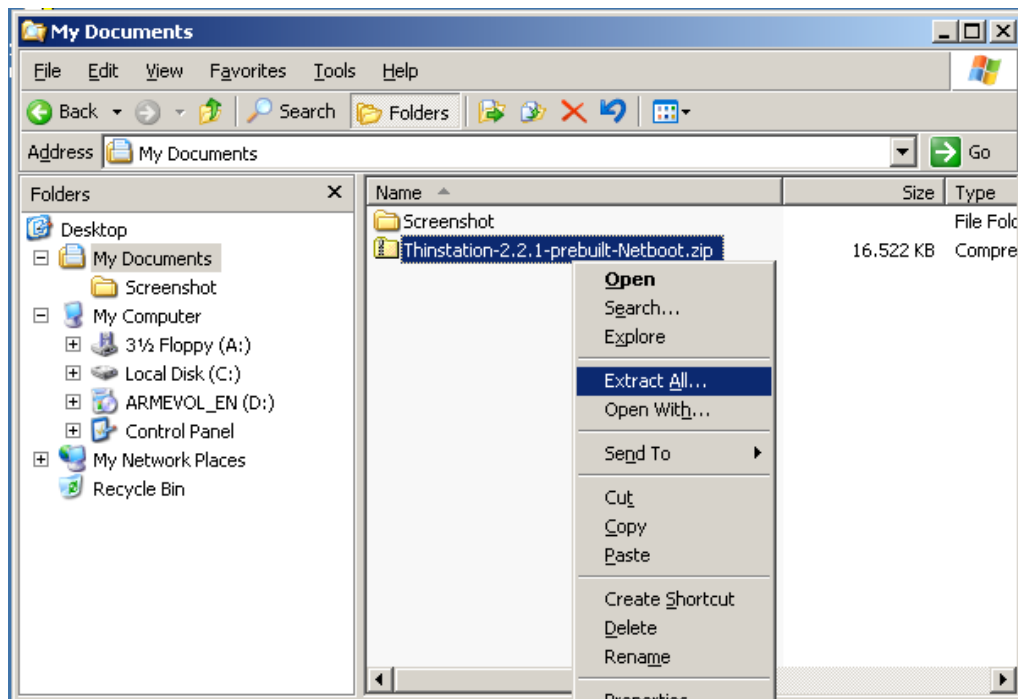
# Download THINSTATION

<http://www.thinstation.net/LiveCD/> download yang network-boot

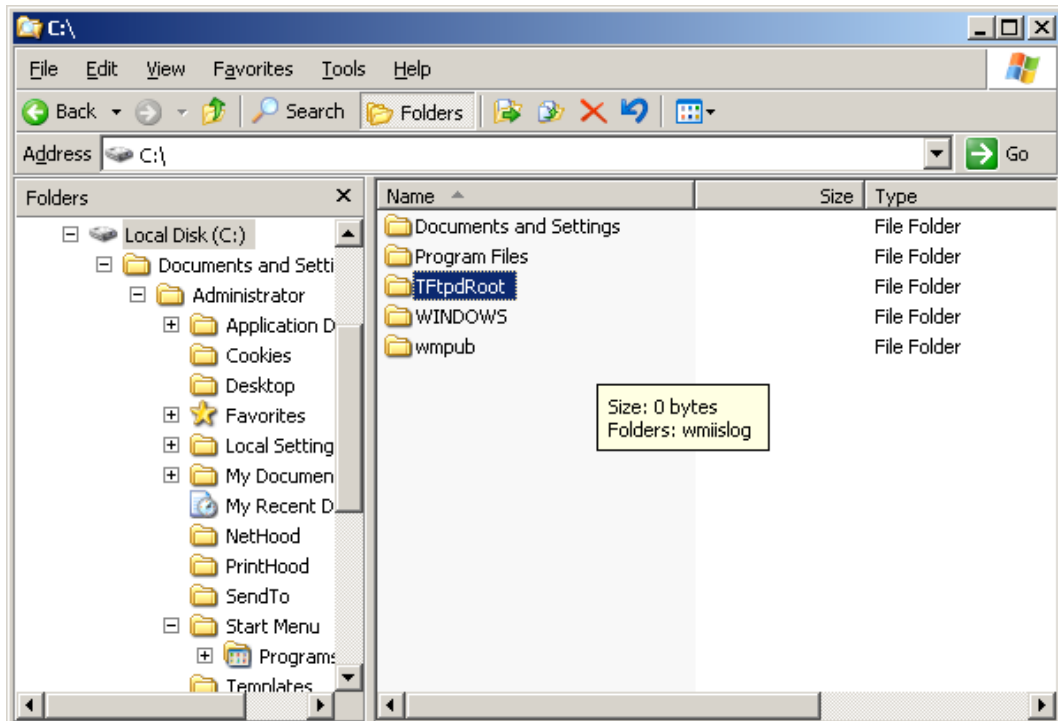
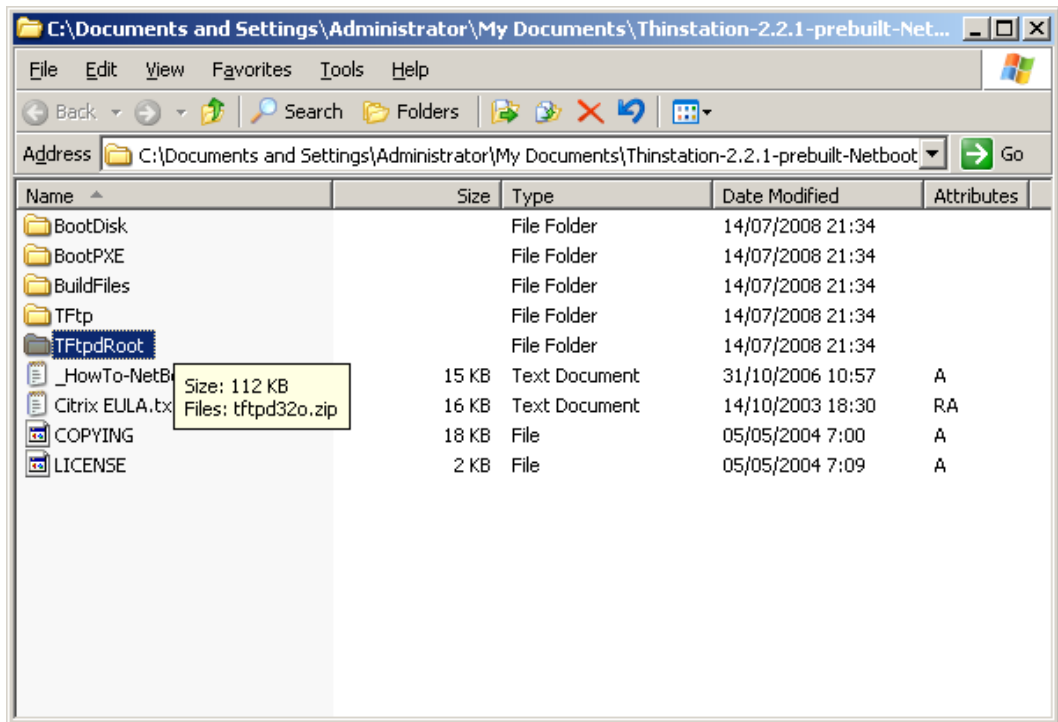
<http://www.thinstation.net/download/2.2/Thinstation-2.2.1-prebuilt-Netboot.zip>



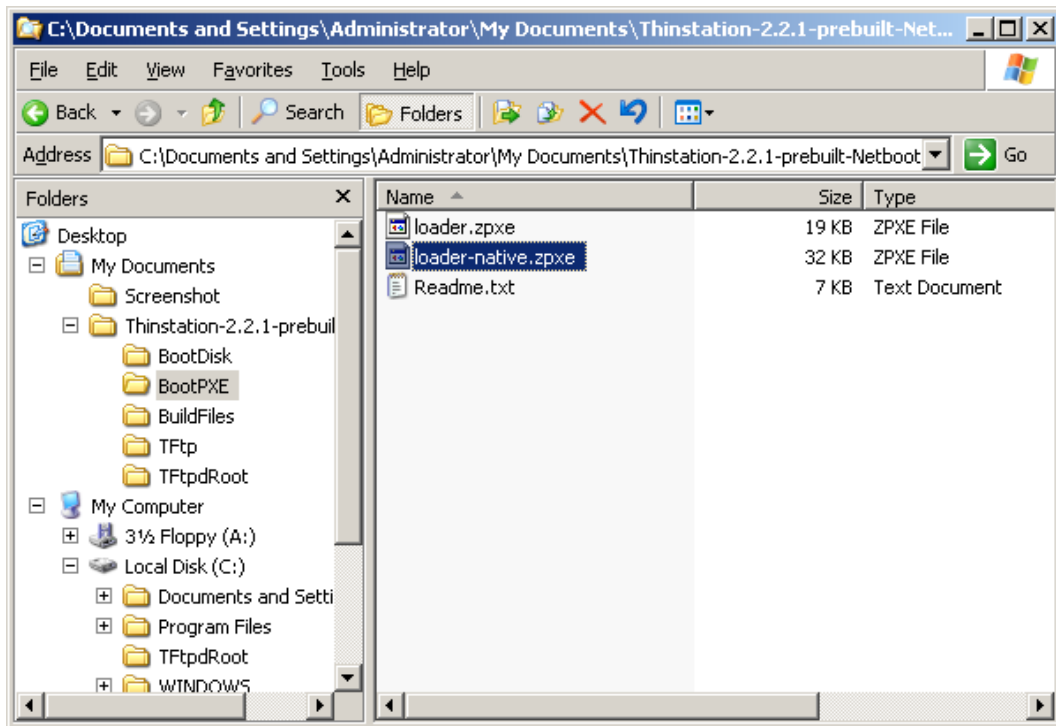
Simpan di My Documents Kemudian di Extract



Copy Folder TftpdRoot ke C:\

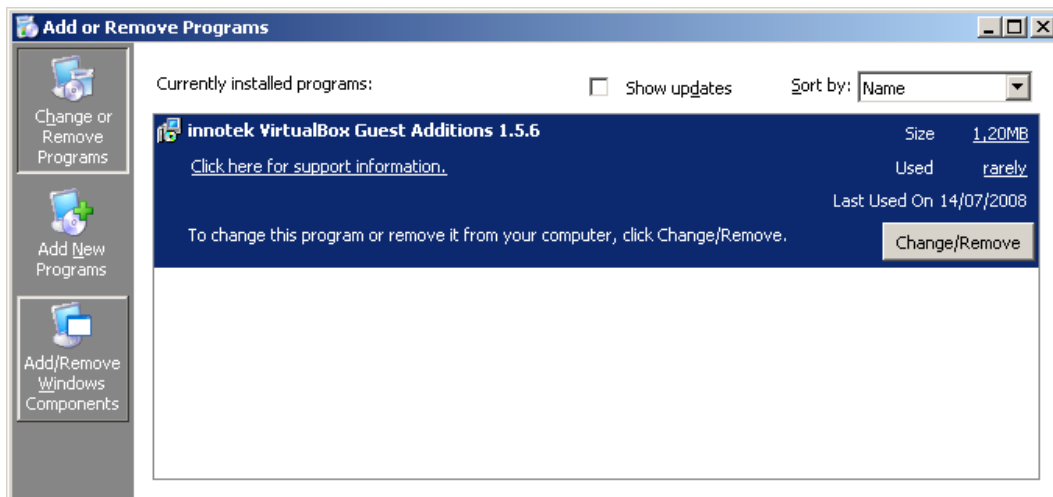


Hapus file thinstation.nbi.zpxe (19 KB) yang ada di [C:\TFtpdRoot](#) Kemudian copy file loader-native.zpxe (32 KB) ke [C:\TFtpdRoot](#) dan rename menjadi thinstation.nbi.zpxe.

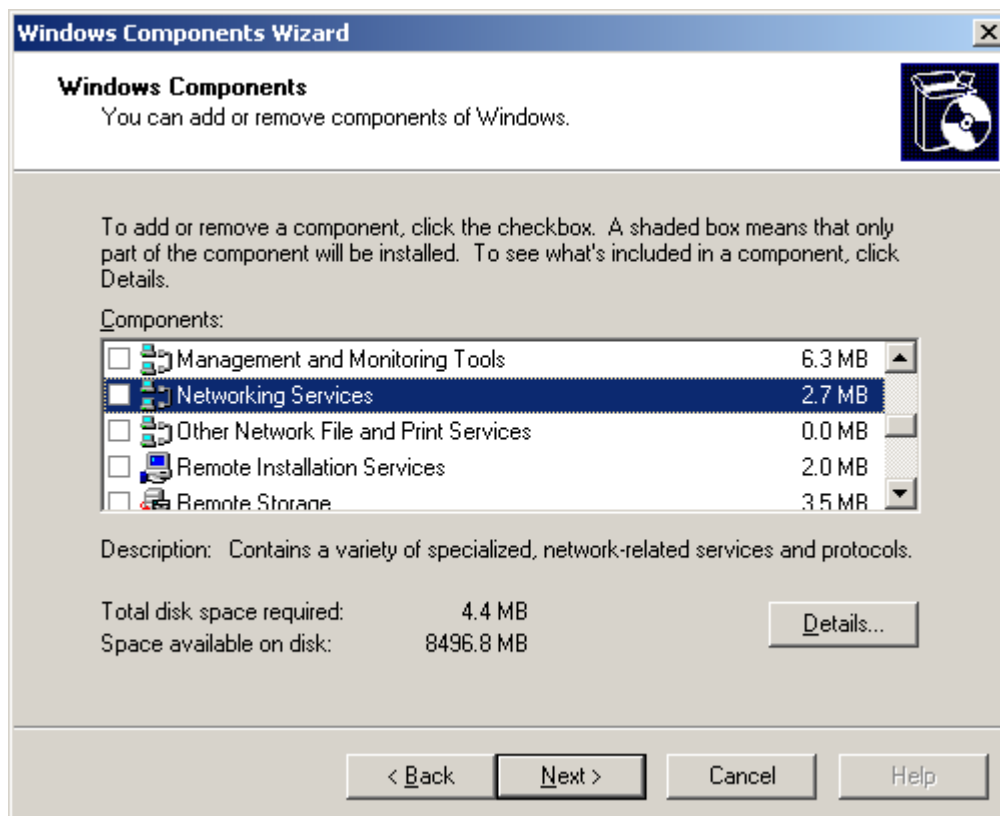


## Install DHCP, TFTP dan Terminal Server

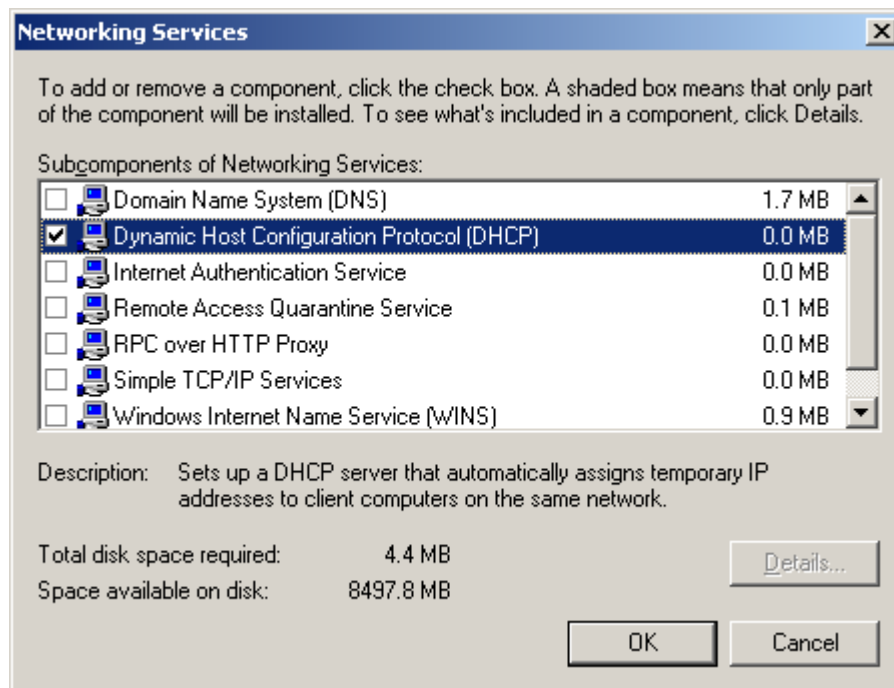
Klik Start → Control Panel → Add Remove or Programs, Kemudian Klik Add/Remove Windows Components



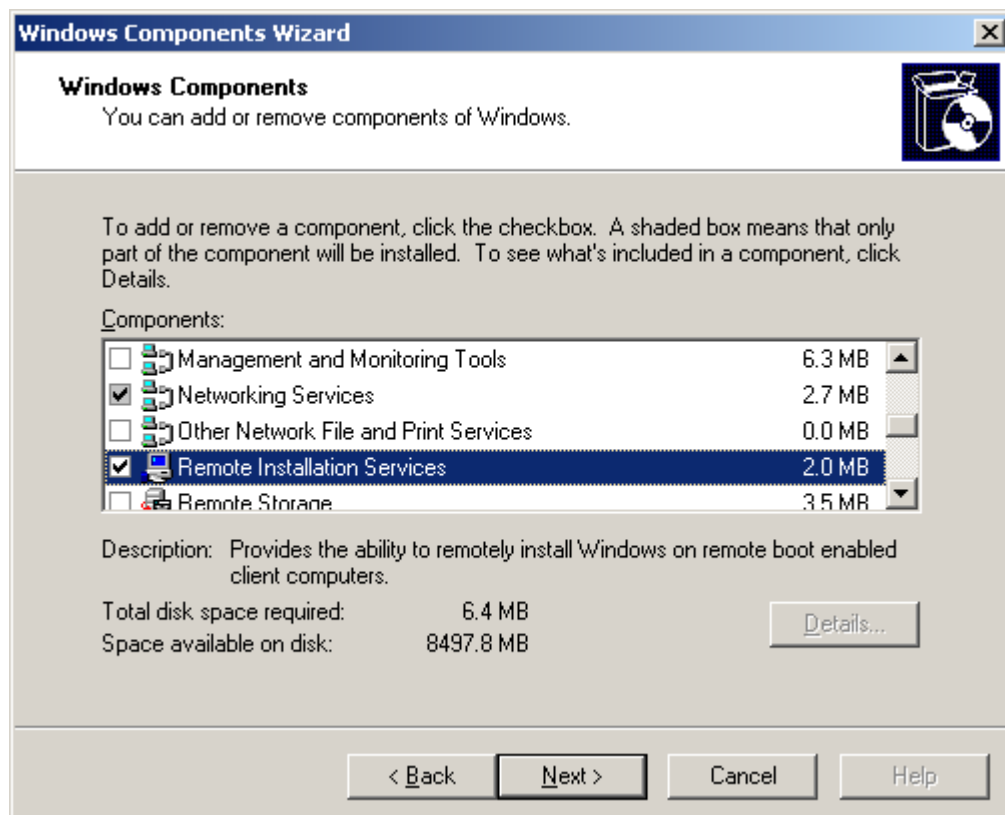
Pilih Networking Services Kemudian klik Details...



Centang DHCP kemudian klik OK

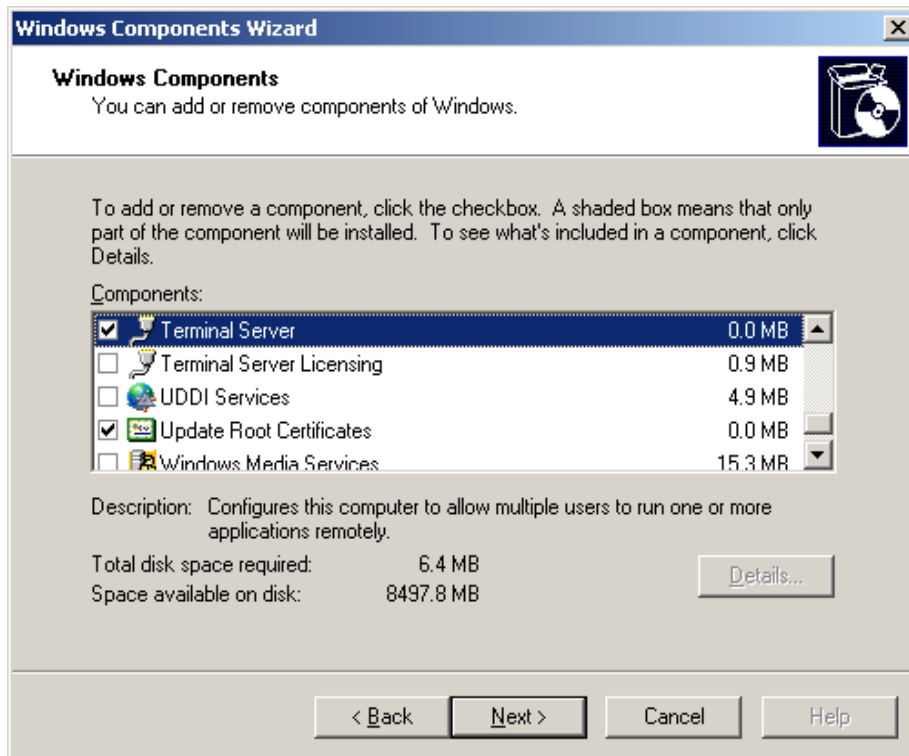


Centang Remote Installation Services

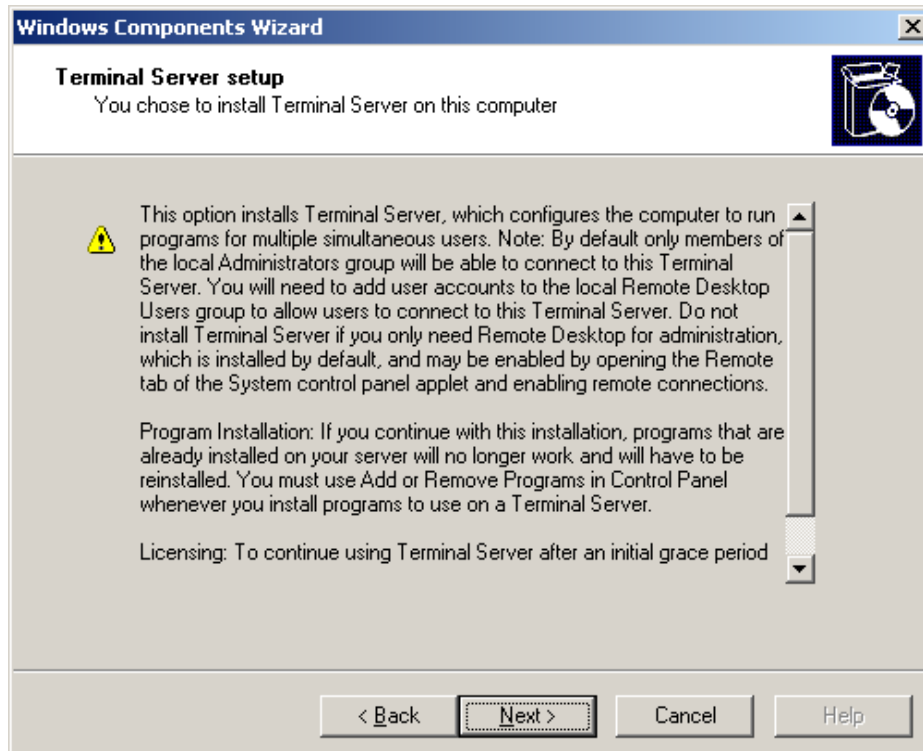




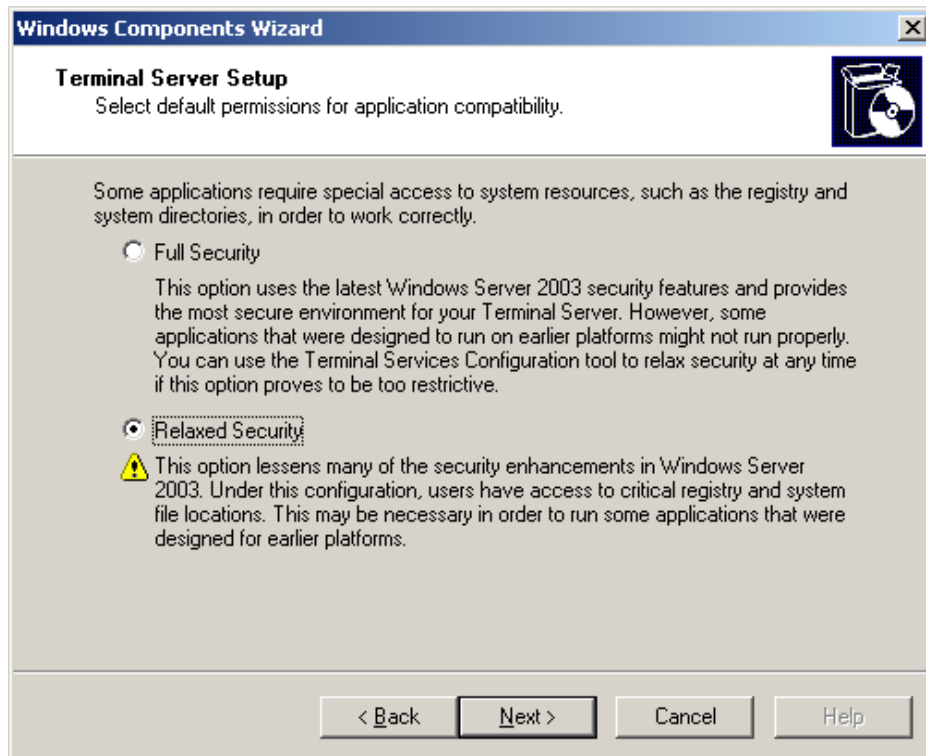
Centang Terminal Server, akan keluar dialog windows Klik yes. Klik Next



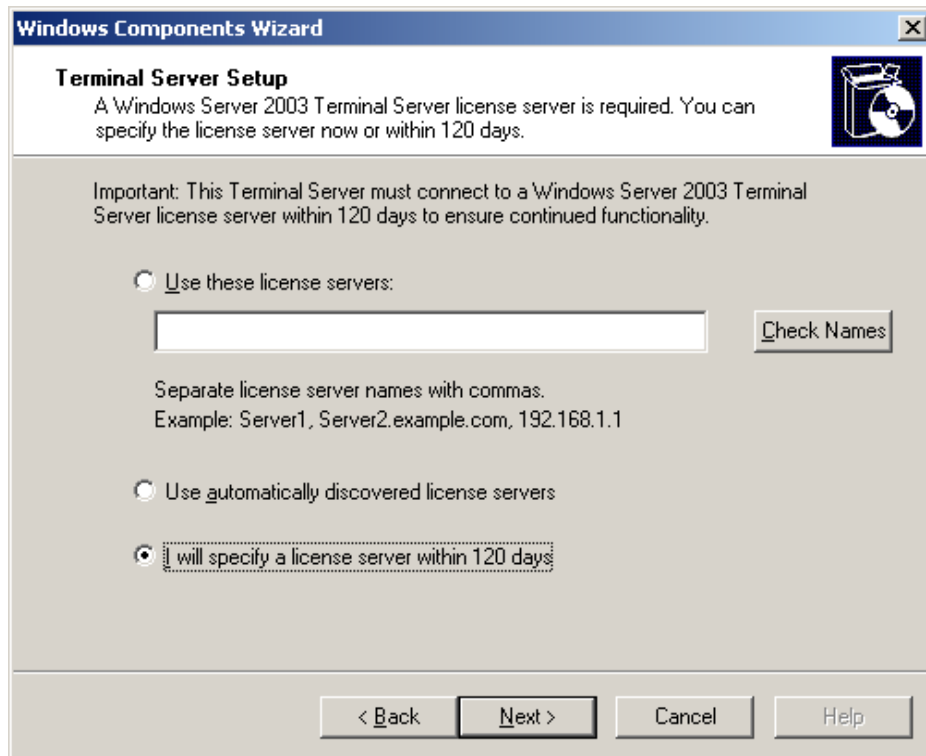
Klik Next



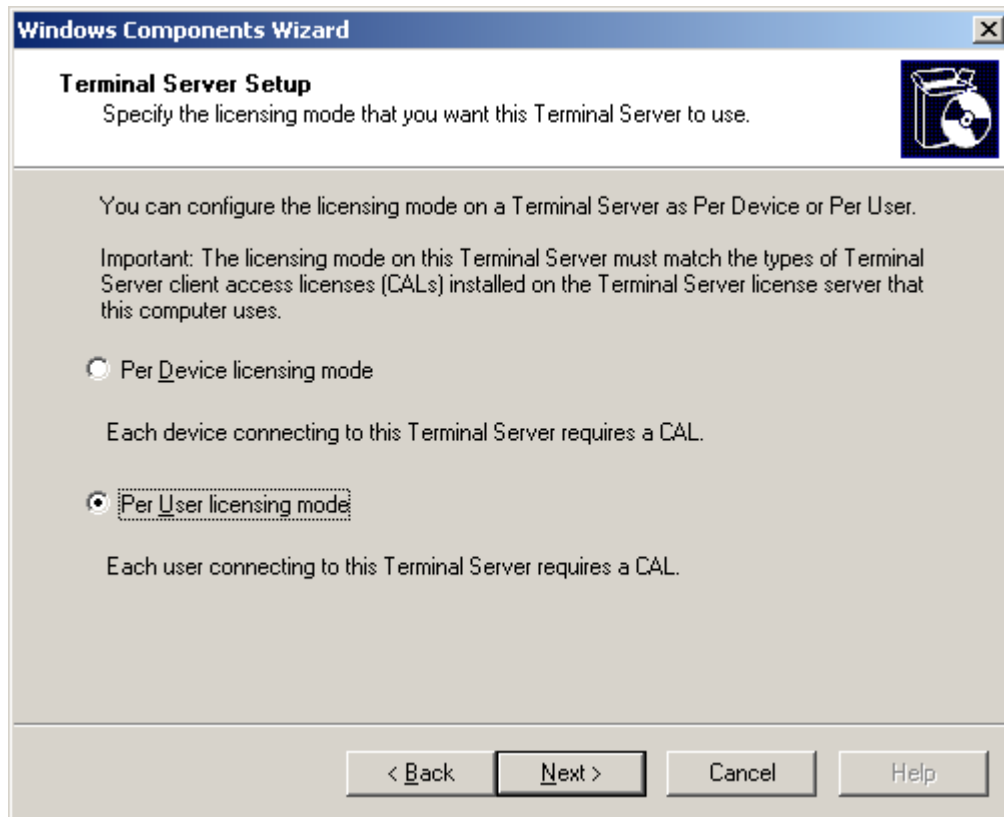
Pilih Relaxed Security, kemudian Next



Pilih "I will specify a license server within 120 days", kemudian Klik Next



Pilih “Per User licensing mode”, Next

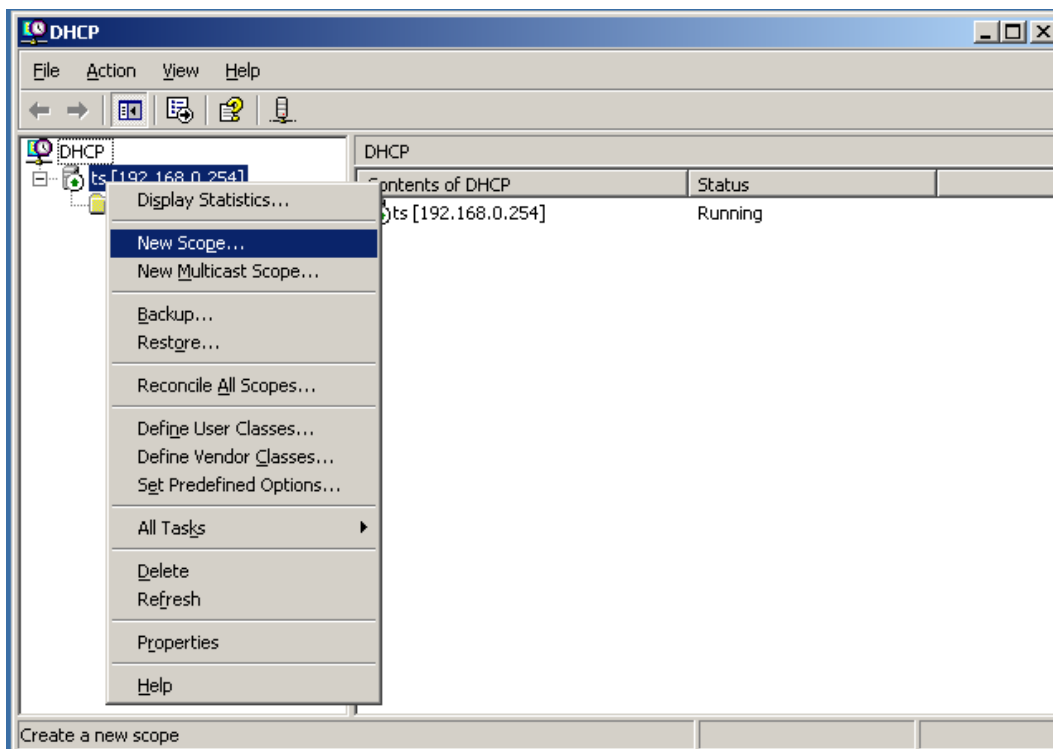


Tunggu sampai proses instalasi selesai kemudian Klik Finish kemudian Restart Komputer.

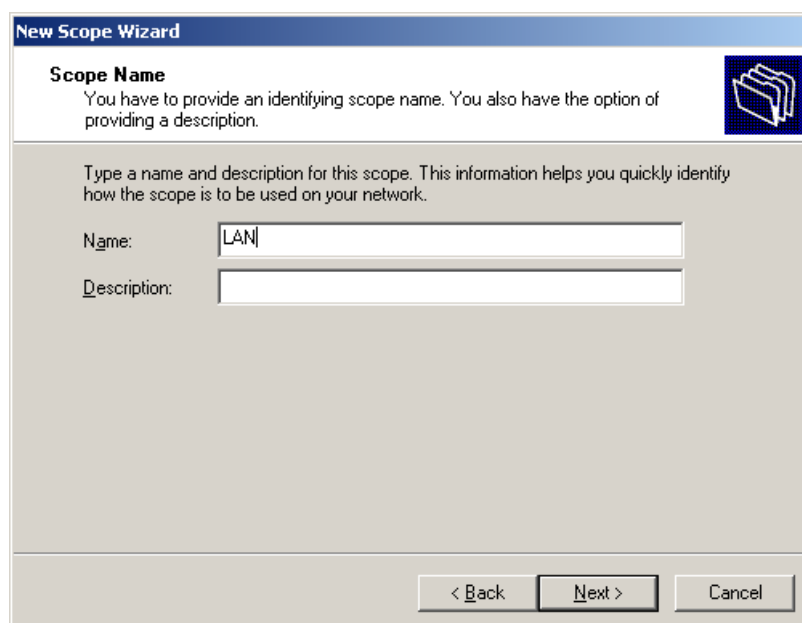
## Setting DHCP Server

Klik Start → Administrative Tools → DHCP

Klik tanda +, kemudian Klik Kanan ...(192.168.0.254), klik New Scope, Next

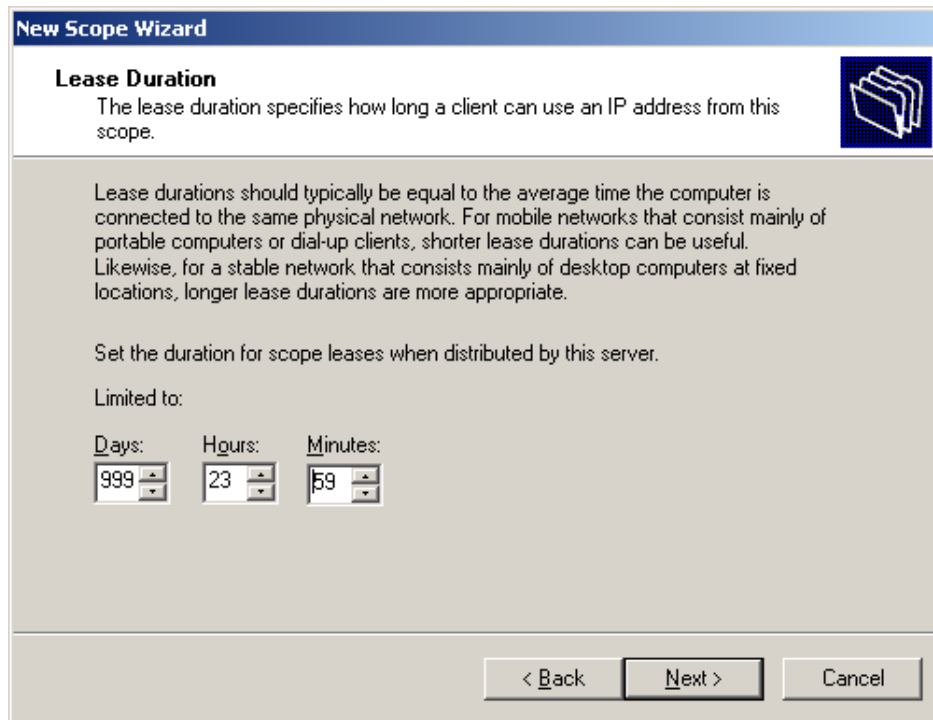


Masukkan Name kemudian Next





Isi Lease Duration kemudian Klik Next



**New Scope Wizard**

**Lease Duration**  
The lease duration specifies how long a client can use an IP address from this scope.

Lease durations should typically be equal to the average time the computer is connected to the same physical network. For mobile networks that consist mainly of portable computers or dial-up clients, shorter lease durations can be useful. Likewise, for a stable network that consists mainly of desktop computers at fixed locations, longer lease durations are more appropriate.

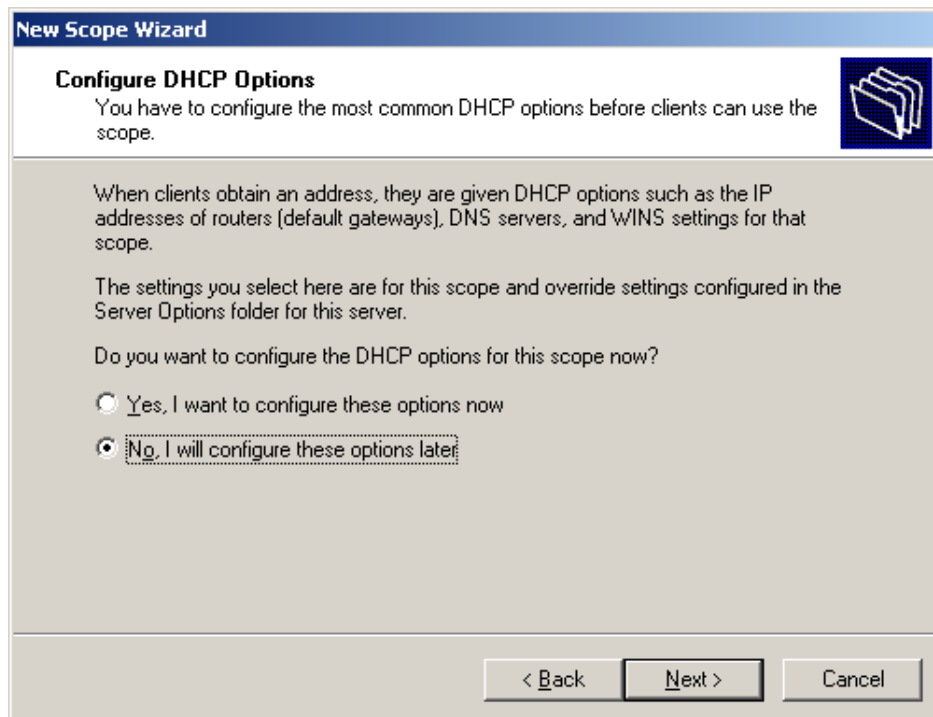
Set the duration for scope leases when distributed by this server.

Limited to:

Days:	Hours:	Minutes:
999	23	59

< Back   Next >   Cancel

Pilih No, kemudian Next dan Finish



**New Scope Wizard**

**Configure DHCP Options**  
You have to configure the most common DHCP options before clients can use the scope.

When clients obtain an address, they are given DHCP options such as the IP addresses of routers (default gateways), DNS servers, and WINS settings for that scope.

The settings you select here are for this scope and override settings configured in the Server Options folder for this server.

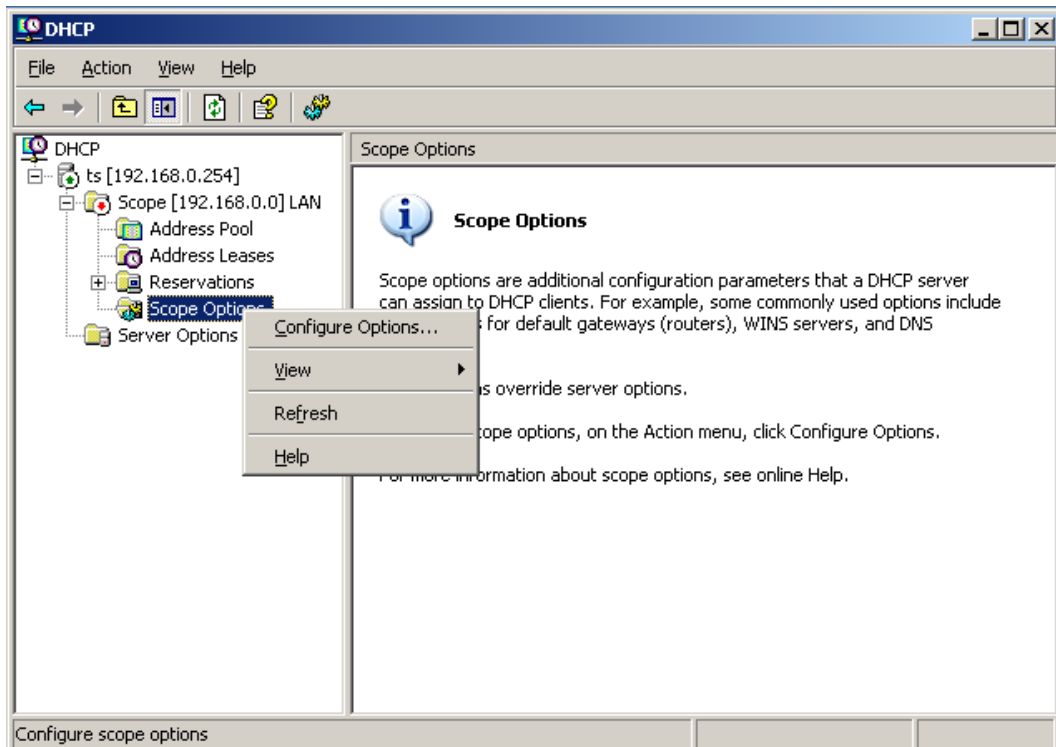
Do you want to configure the DHCP options for this scope now?

Yes, I want to configure these options now

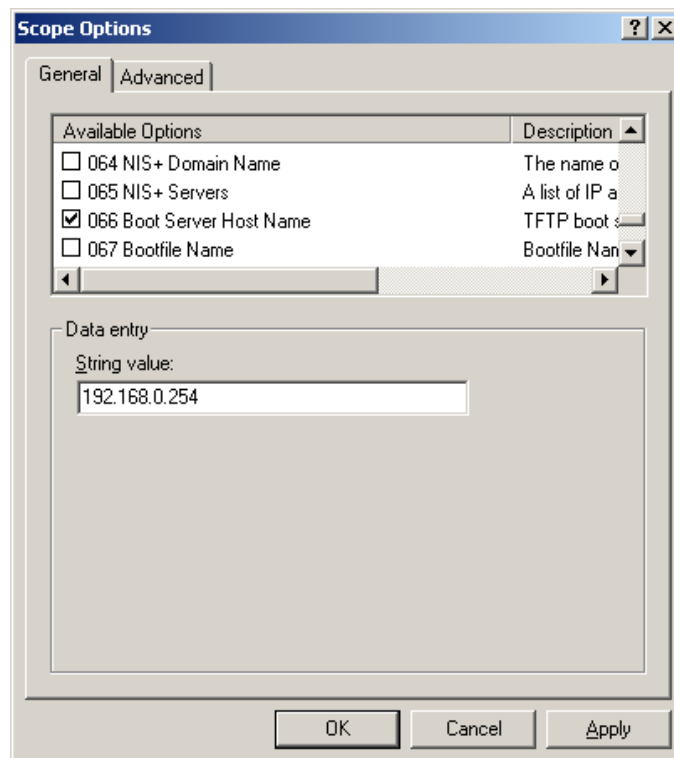
No, I will configure these options later

< Back   Next >   Cancel

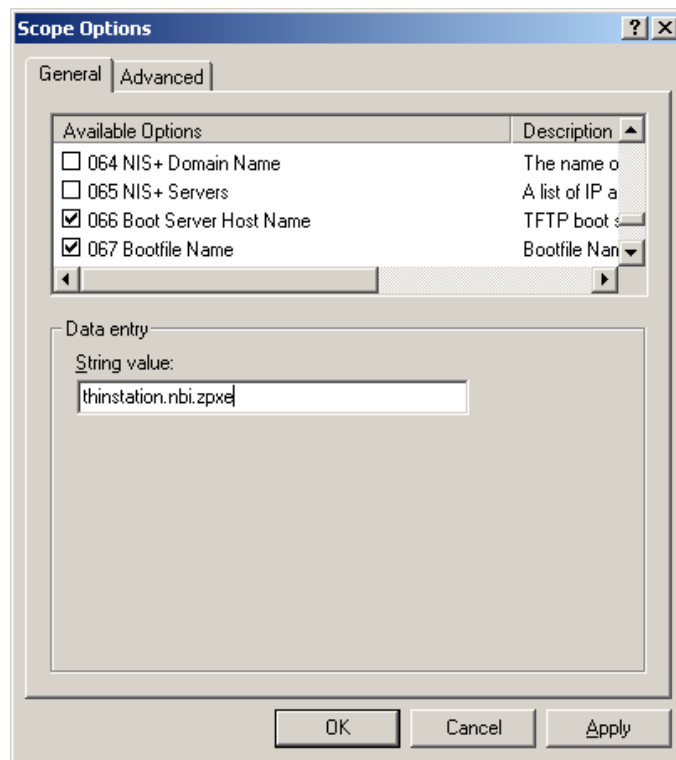
Klik kanan Scope Options → Klik Configure Options



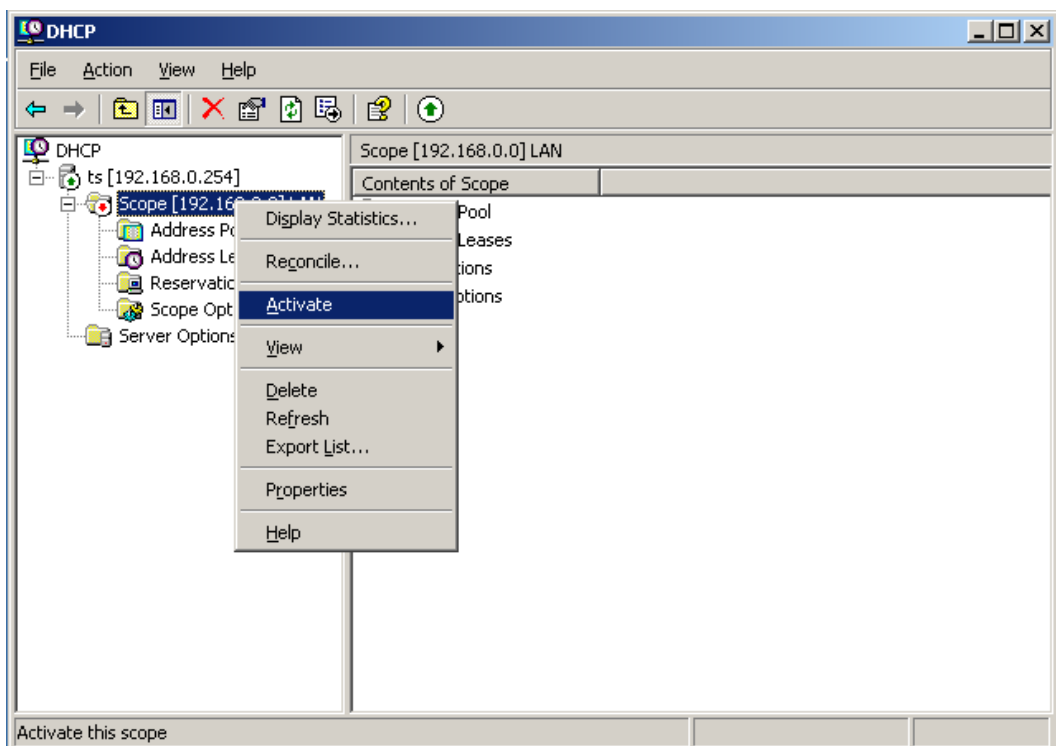
Centang 066 Boot Server Host Name kemudian isi dengan IP address server



Centang 067 Bootfile Name kemudian isi dengan “thinstation.nbi.zpxe”



Setting DHCP selesai, aktifkan dengan Klik kanan Scope kemudian Klik Activate

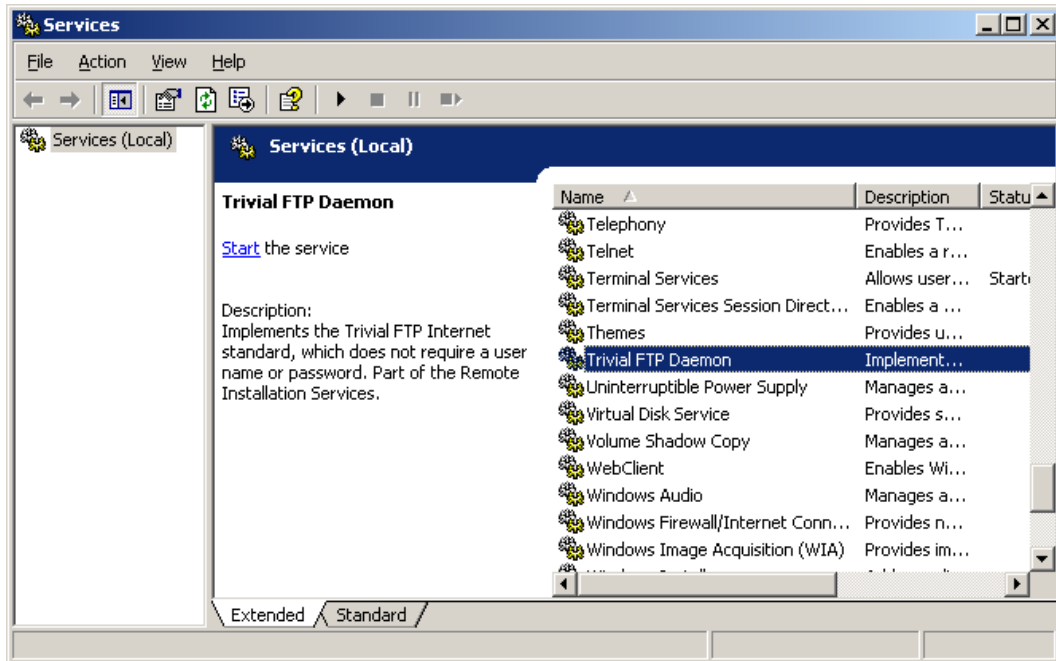




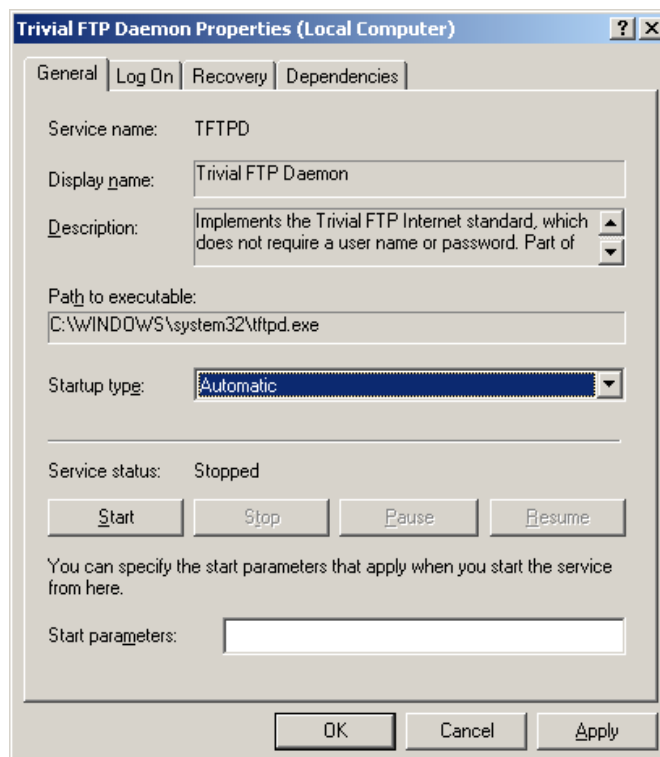
## Setting TFTP Server

Klik Start → Administrative Tools → Services

Klik dua kali Trivial FTP Daemon

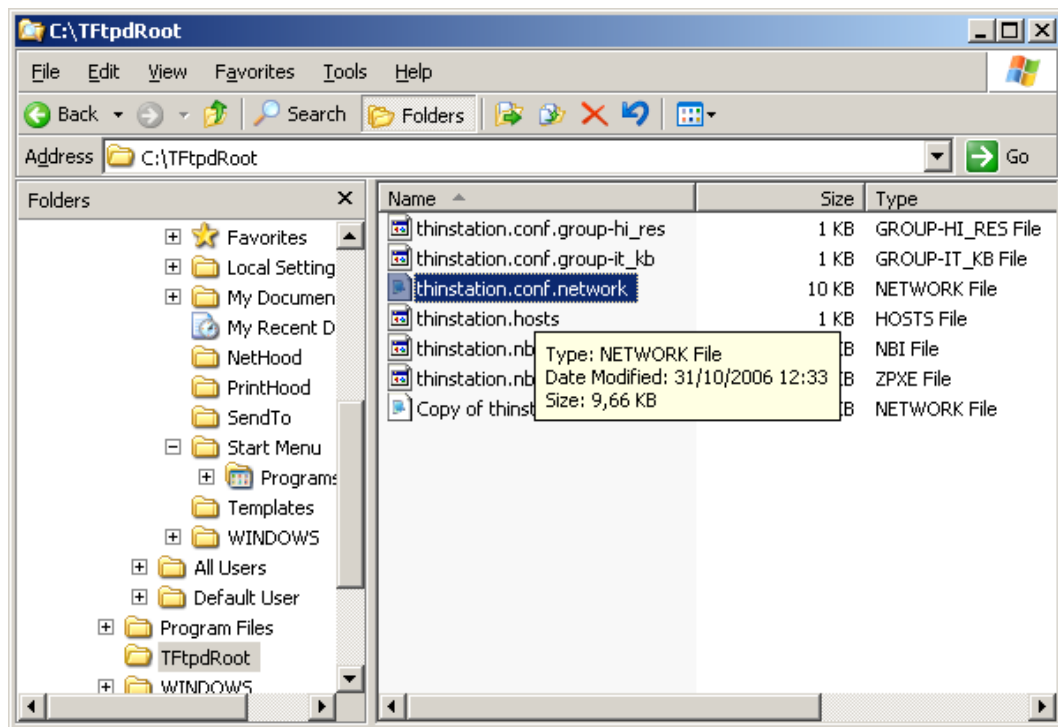


Pada Startup type pilih Automatic → klik Start → OK



## Setting THINSTATION

Buka explorer [C:\TFtpdRoot](#) , backup thinstation.conf.network terlebih dahulu. Copy thinstation.conf.network kemudian paste. Buka *thinstation.conf.network* dengan notepad kemudian edit



Hapus semua isi *thinstation.conf.network* ganti dengan text berikut

```
SESSION_0_TITLE="Windows 2003 terminal server"
```

```
SESSION_0_TYPE=rdesktop
```

```
SESSION_0_RDESKTOP_SERVER=192.168.0.254
```

```
SESSION_0_RDESKTOP_OPTIONS="-u " -a 16"
```

```
SESSION_0_AUTOSTART=ON
```

```
AUDIO_LEVEL=67
```

```
KEYBOARD_MAP=en_us
```

```
RECONNECT_PROMPT=On
```

```
SCREEN_RESOLUTION="800x600"  
#SCREEN_RESOLUTION="1024x768"
```

```
SCREEN_COLOR_DEPTH="16"
```

```
SCREEN_HORIZSYNC="30-64"  
SCREEN_VERTREFRESH="56-60"
```

```
SCREEN_BLANK_TIME=10  
SCREEN_STANDBY_TIME=20  
SCREEN_SUSPEND_TIME=30  
SCREEN_OFF_TIME=60
```

```
MOUSE_RESOLUTION=100
```

Simpan perubahan kemudian tutup notepad.

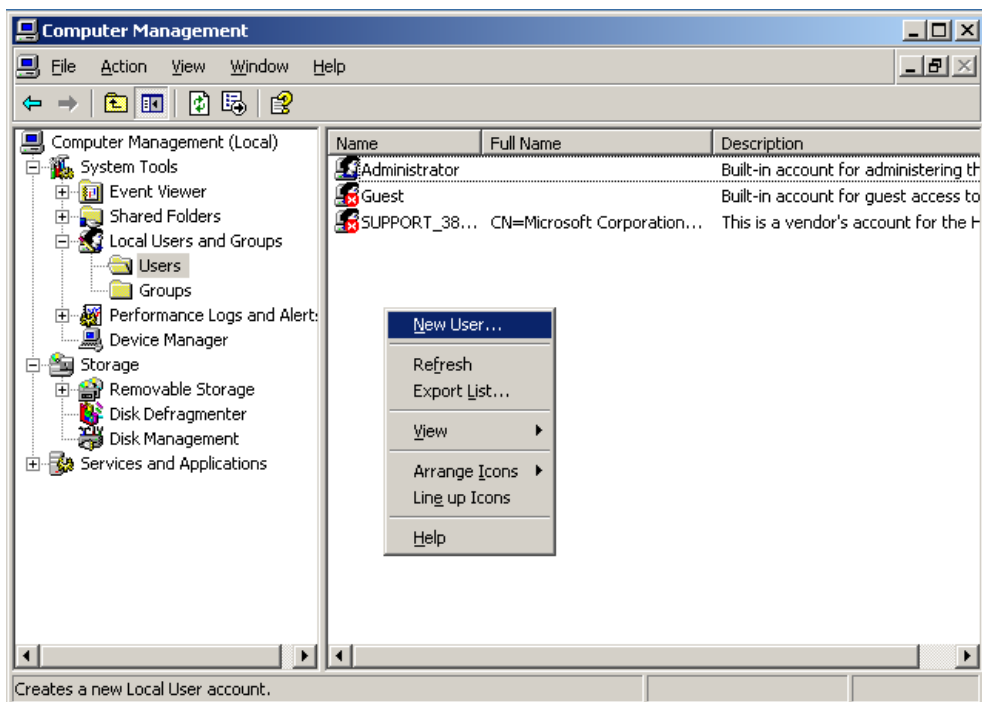
Sampai disini Terminal Server sudah berjalan. Pastikan semua DHCP Service dan TFTP Server dalam keadaan "Started" (Check di Start → Administrative Tools → Services). Siapkan komputer client, dan setting BIOS nya untuk booting dari Card LAN. Terlihat proses pencarian IP address dan download file thinstation.nbi. Setelah itu, dialog login Windows 2003 Server akan tampil di komputer anda. Login dengan user Administrator.

## Add User

Klik Start → Administrative Tools → Computer Management

Klik System Tools → Local Users and Groups → Users

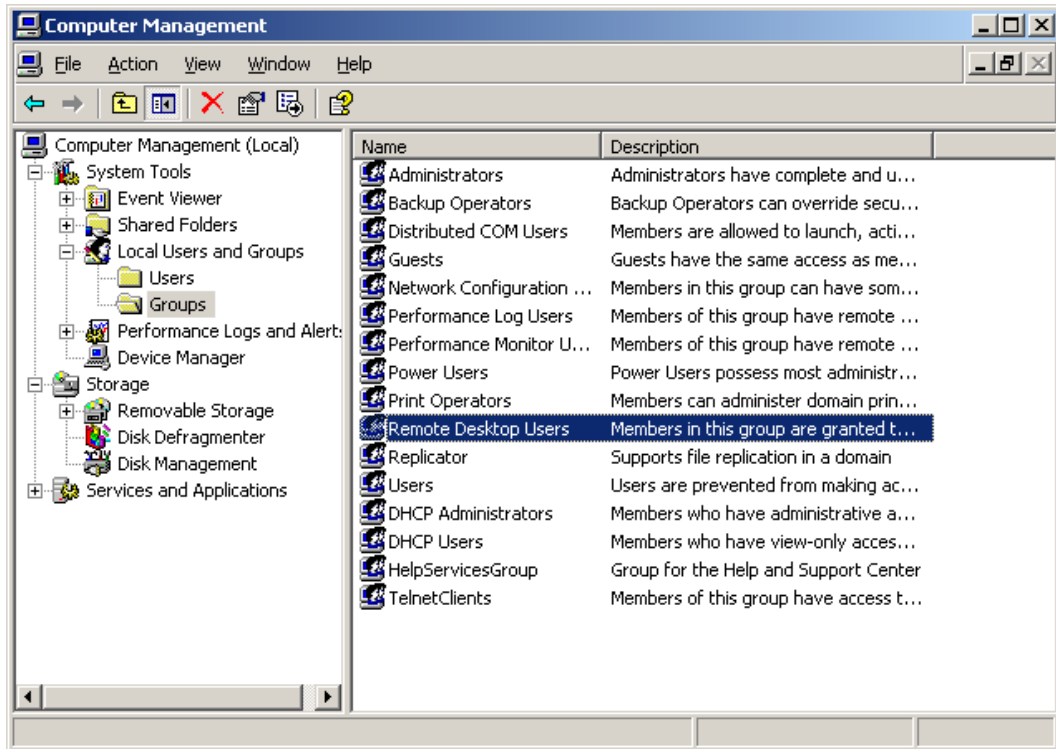
Klik kanan → New User...



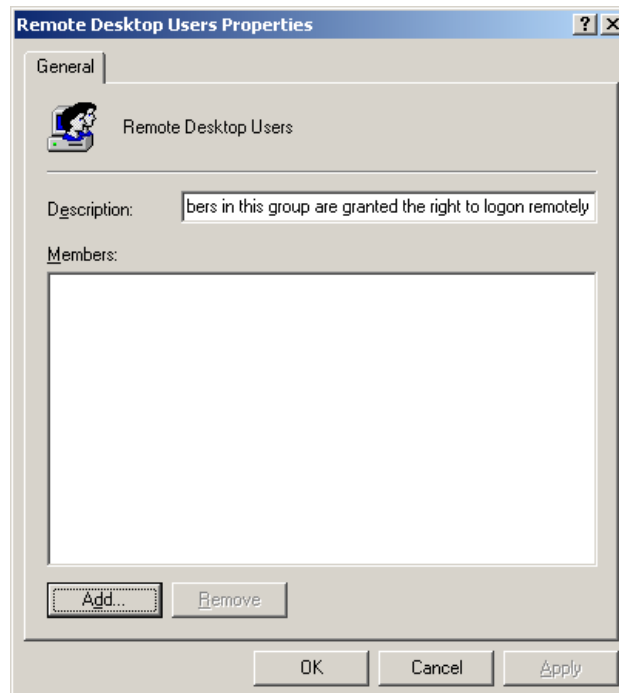
Masukkan user name dan Full name, kosongkan password, centang “User cannot change password” dan “Password never expires” klik Create kemudian Close

User name: com-1  
Full name: com-1  
Description:   
Password:   
Confirm password:   
 User must change password at next logon  
 User cannot change password  
 Password never expires  
 Account is disabled  
Create Close

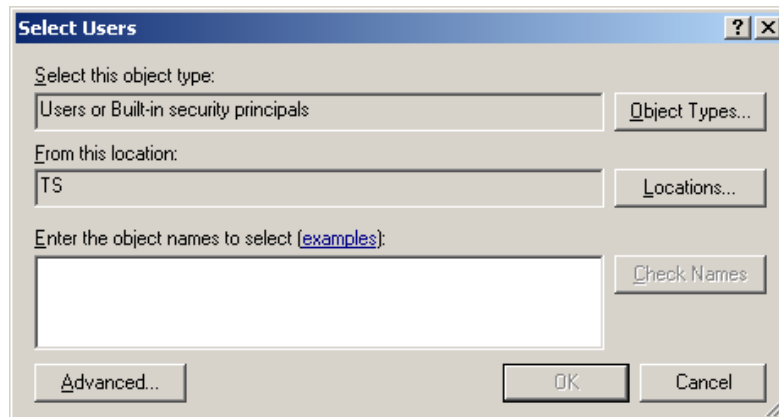
Agar bisa login melalui Komputer Client masukkan user tadi kedalam Groups “Remote Desktop Users”. Klik Groups → Klik dua kali “Remote Desktop Users”



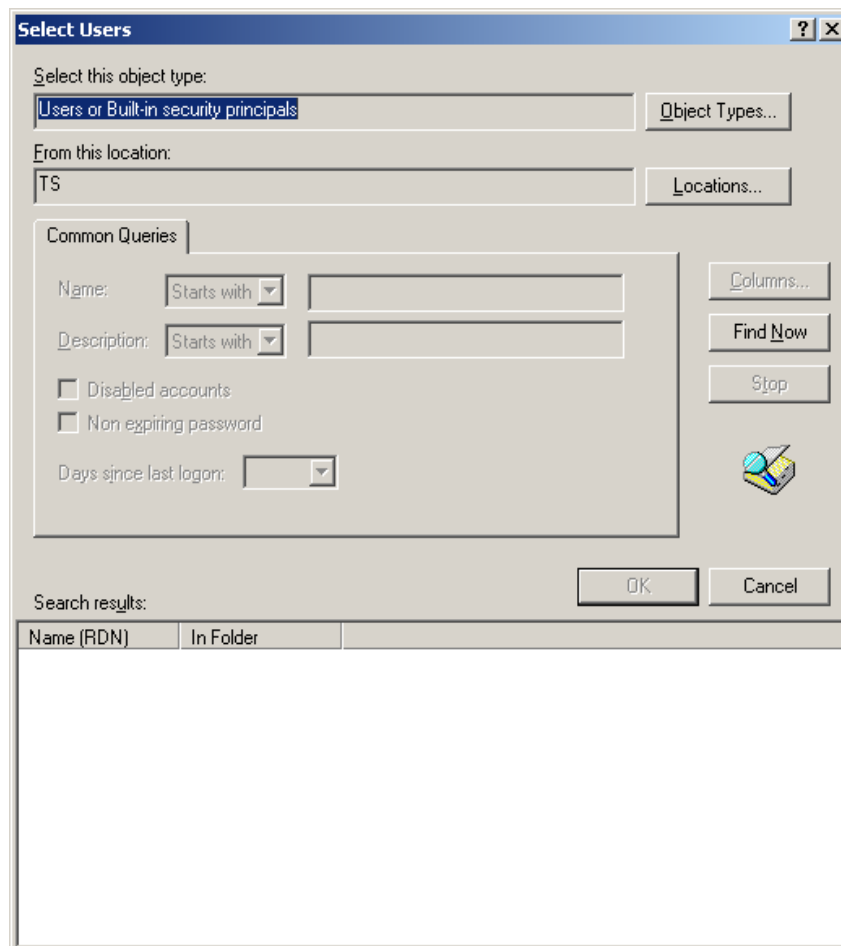
Klik Add...



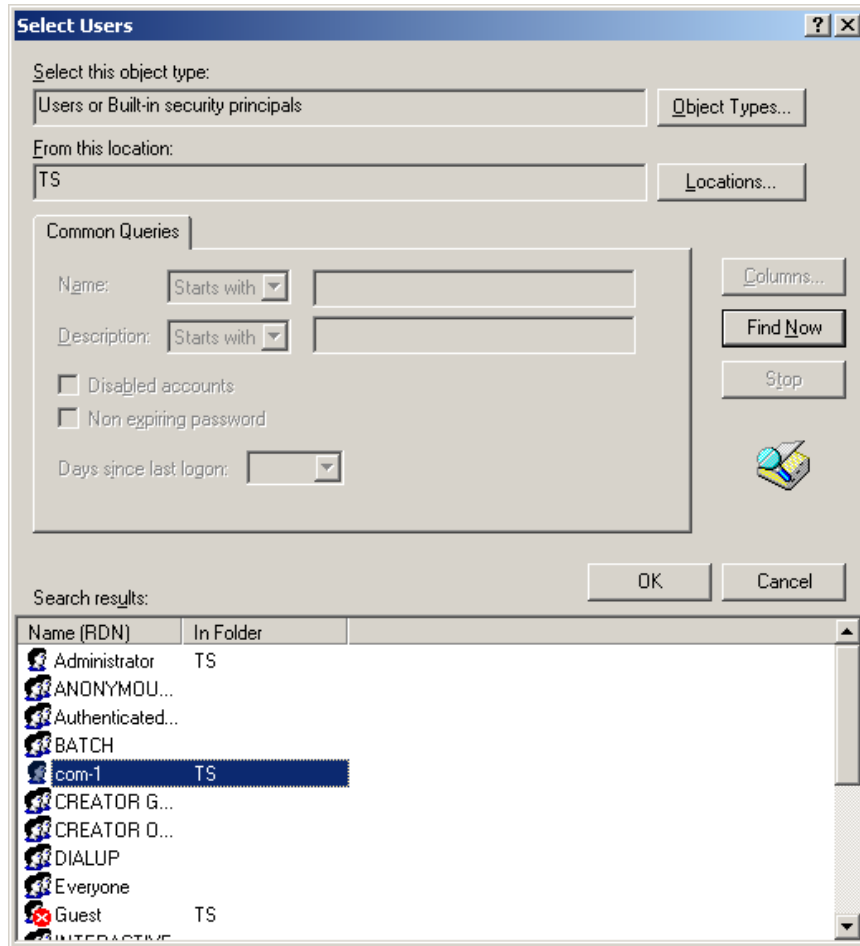
Klik Advanced...



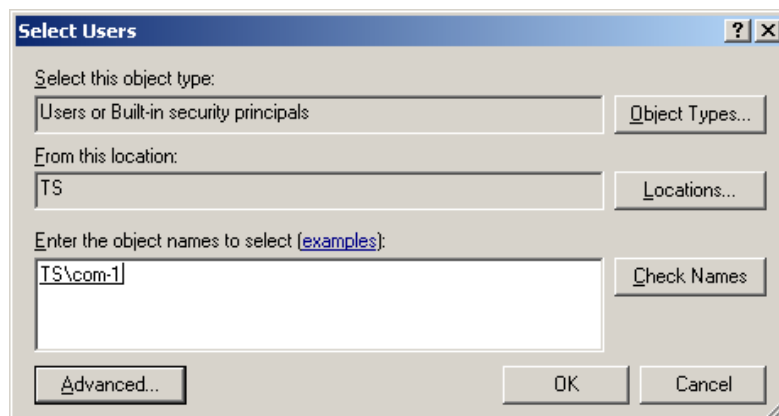
Klik Find Now



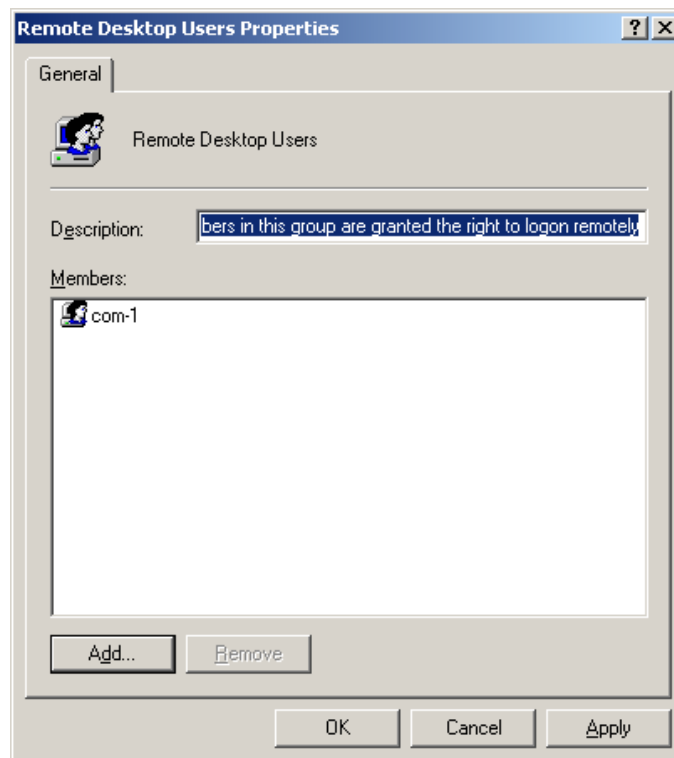
Pilih user yang akan dimasukkan, Tekan Ctrl untuk memilih lebih dari satu. Kemudian Klik OK



Klik OK



Klik OK



Karena Tadi password user kita kosongi Berikutnya Kita perlu men Setting Local Security Policy supaya User bisa login tanpa passowrd.

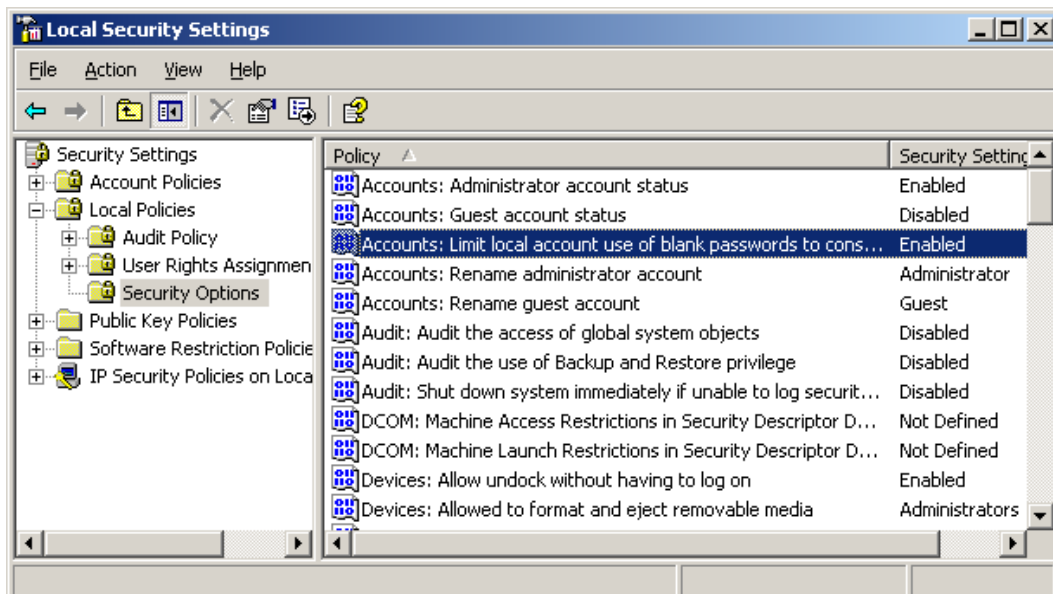


## Setting Local Security Policy

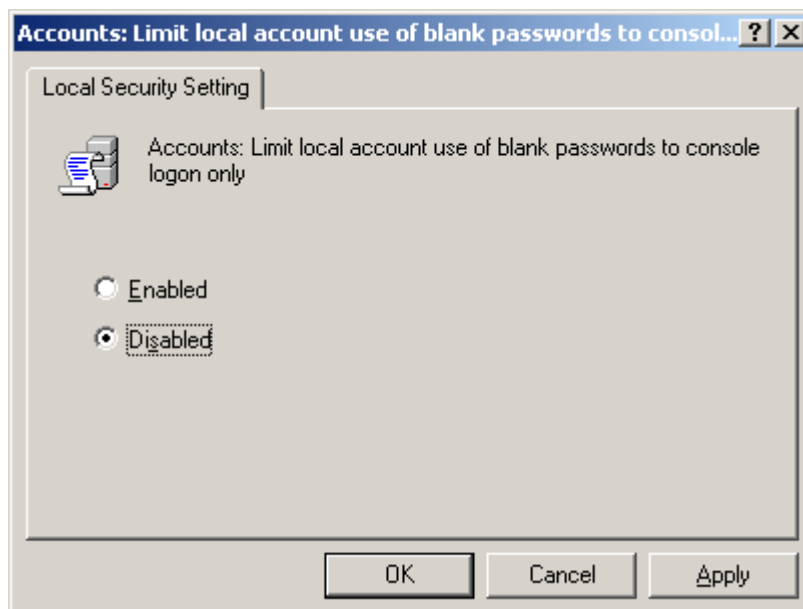
Klik Start → Administrative Tools → Local Security Policy

Mengijinkan user login tanpa password

Klik Local Policies → Security Options → Klik Dua kali Account: Limit local account use of blank . . .

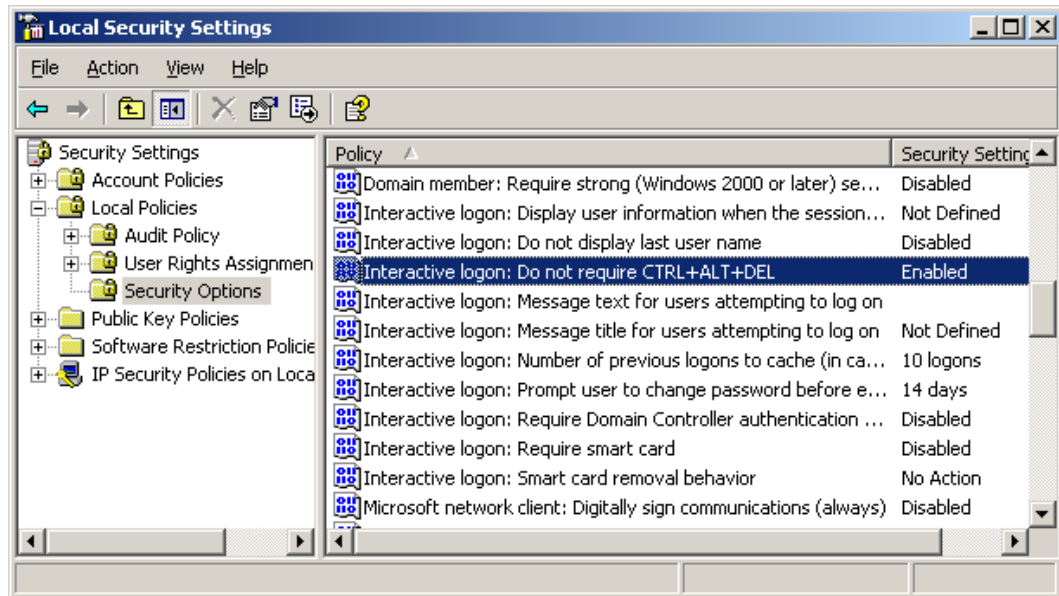


Disabled kemudian Klik OK



Menghilangkan CTRL-ALT-DEL saat booting

Enable Interactive Login: Do not require CTRL-ALT-DEL

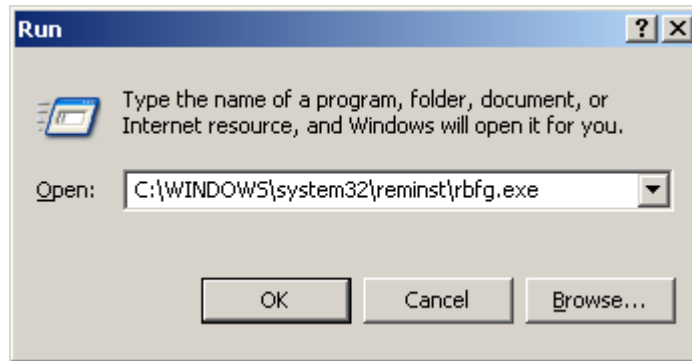


Sekarang user com-1 dapat login melalui Komputer Client tanpa password.

## Booting dari Disket dan CDROM

Program untuk membuat disket boot C:\WINDOWS\system32\reminst\rbfg.exe

Start → run



OK

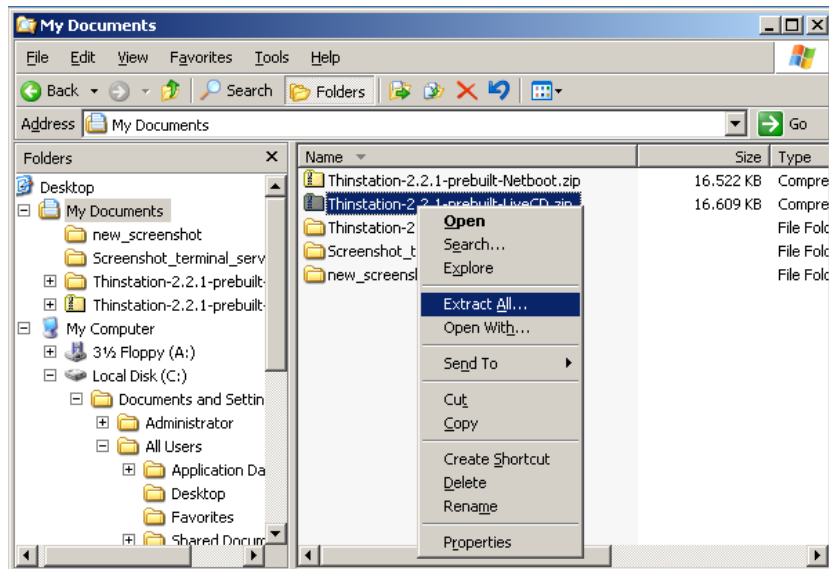


Masukkan Disket kosong kemudian klik Create Disk

Untuk Booting dari CDROM download Thinstation Live CD di <http://www.thinstation.net/LiveCD/>

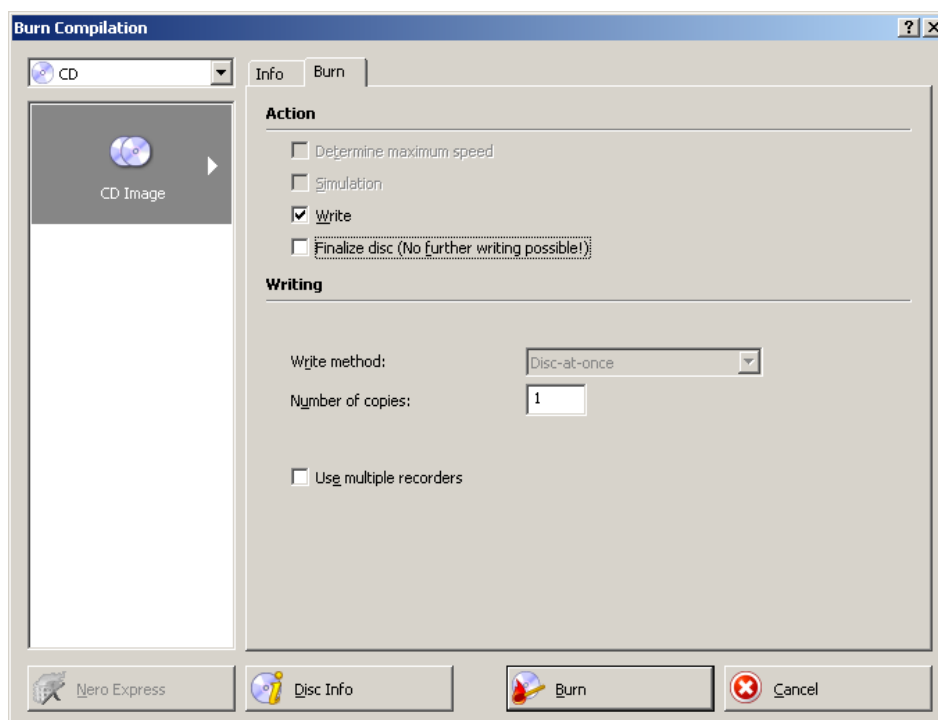
<http://www.thinstation.net/download/2.2/Thinstation-2.2.1-LiveCD.basic.zip>

simpan di My Documents kemudian extract



Burning file CD\thinstation.iso dengan nero burning atau program burning lainnya, setting agar CD bisa di burning lagi untuk menambahkan file konfigurasi.

Di Nero hilangkan centang Finalize disc (No futher writing possible)



Folder yang akan dimasukkan ke CD adalah *thinstation.profile* yang ada di dalam folder `..\Thinstation-2.2.1-prebuilt-LiveCD\Floppy\`

Terlebih dahulu edit file *thinstation.profile\thinstation.conf.user* dengan notepad dan hapus semua isinya ganti dengan text dibawah ini (isinya sama dengan file `C:\TFtpdRoot\thinstation.conf.network`).

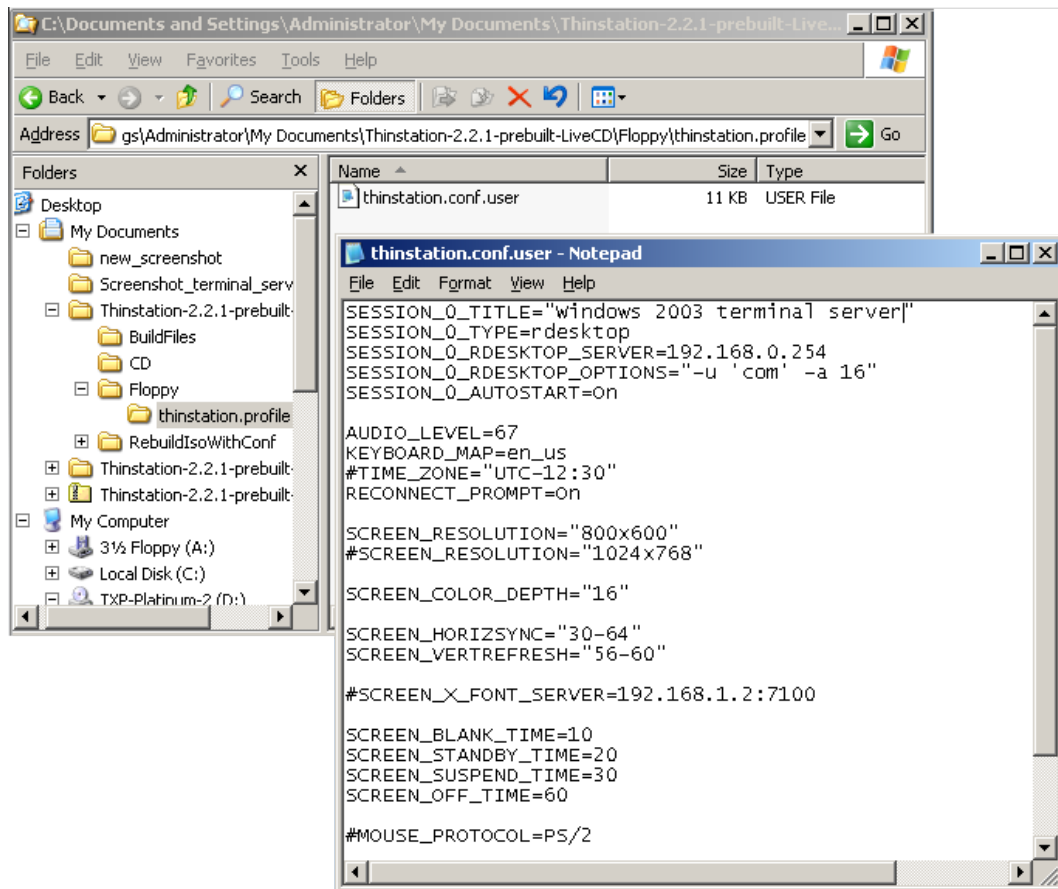
```
SESSION_0_TITLE="Windows 2003 terminal server"
SESSION_0_TYPE=rdesktop
SESSION_0_RDESKTOP_SERVER=192.168.0.254
SESSION_0_RDESKTOP_OPTIONS="-u " -a 16"
SESSION_0_AUTOSTART=ON
```

```
AUDIO_LEVEL=67
KEYBOARD_MAP=en_us
RECONNECT_PROMPT=On
```

```
SCREEN_RESOLUTION="800x600"
#SCREEN_RESOLUTION="1024x768"
SCREEN_COLOR_DEPTH="16"
SCREEN_HORIZSYNC="30-64"
SCREEN_VERTREFRESH="56-60"
```

```
SCREEN_BLANK_TIME=10
SCREEN_STANDBY_TIME=20
SCREEN_SUSPEND_TIME=30
SCREEN_OFF_TIME=60
```

```
MOUSE_RESOLUTION=100
```



Simpan perubahan, kemudian tambahkan folder *thinstation.profile* kedalam CD menggunakan Nero atau program burning lainnya (Continue multisession).

## Konfigurasi THINSTATION

Ada dua file konfigurasi yang akan kita gunakan dalam tutorial ini

- thinstation.conf.network : file konfigurasi default yang diambil client ketika booting
- thinstation.conf-<MAC> : file konfigurasi khusus untuk MAC address yang telah ditentukan

### mengaktifkan Sound dan USB Client

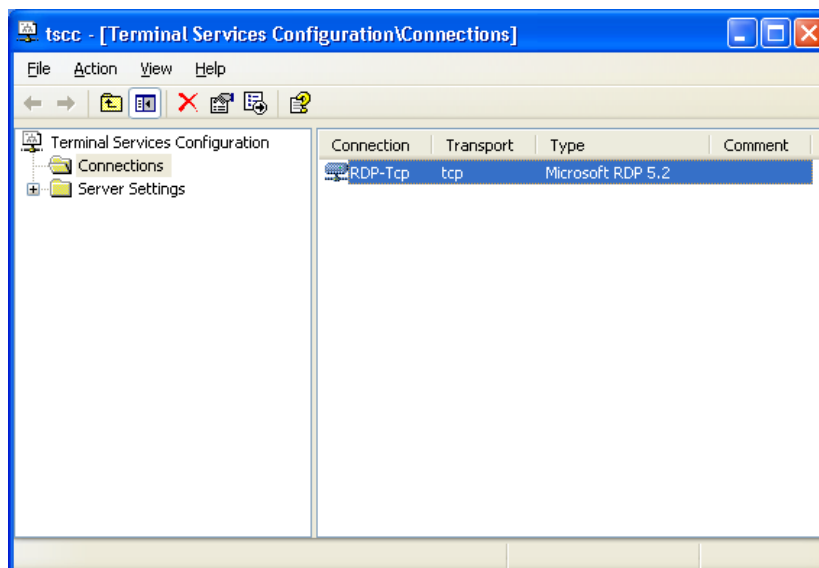
Untuk mengaktifkan Sound dan USB buka file thinstation.conf.network. Edit bagian SESSION\_0\_RDESKTOP\_OPTIONS seperti contoh dibawah ini:

```
SESSION_0_TITLE="Windows 2003 terminal server"  
SESSION_0_TYPE=rdesktop  
SESSION_0_RDESKTOP_SERVER=192.168.0.254  
SESSION_0_RDESKTOP_OPTIONS="-u " -a 16 -r sound -r disk:usb=/mnt/usbdevice"  
SESSION_0_AUTOSTART=ON
```

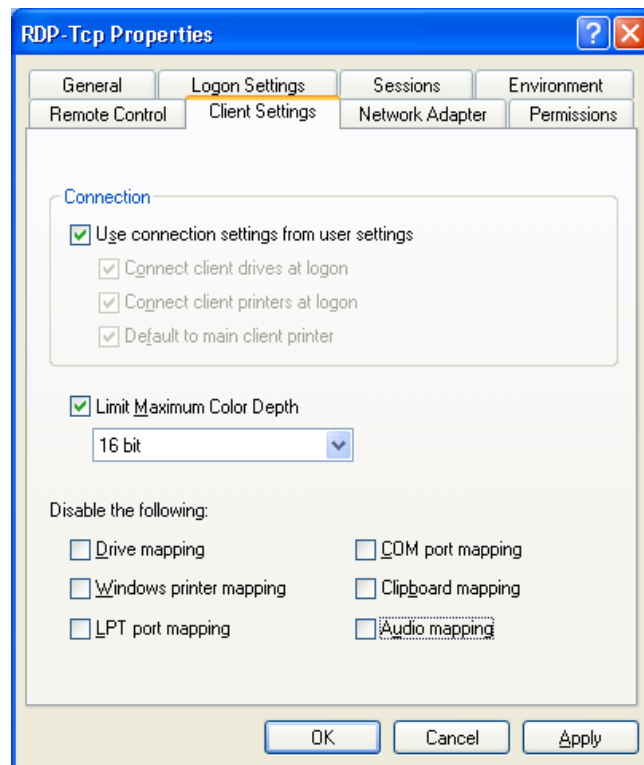
simpan perubahan, kemudian aktifkan sound mapping (default disabled)

Klik Start → Administrative Tools → Terminal Services Configuration

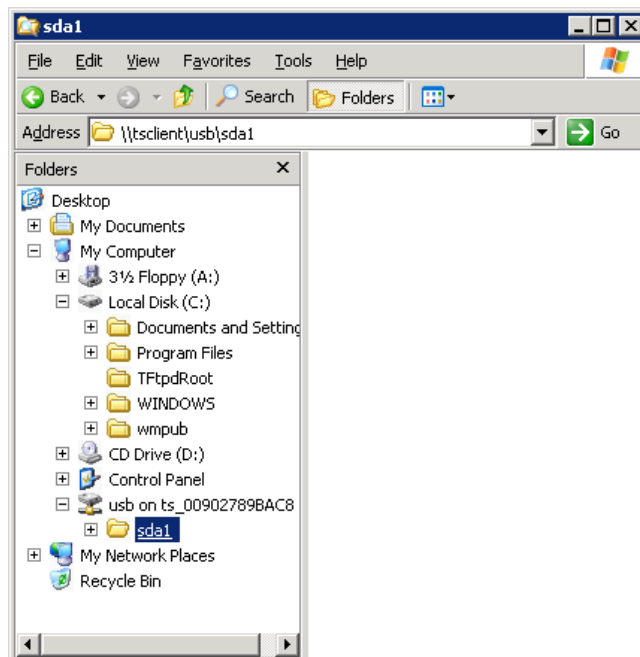
Klik dua kali RDP-Tcp



Klik tab Client Settings → hilangkan centang pada Audio mapping → OK



Reboot komputer client kemudian coba mainkan music dan menghubungkan USB Flash di komputer client.





## Mengganti resolusi monitor Client

Untuk mengganti resolusi monitor misalnya menjadi 1024x768 ubah seperti contoh dibawah, jangan lupa ubah HORIZSYNC dan VERTREFRESH sesuai spesifikasi monitor anda. Untuk amannya sesuaikan dengan contoh dibawah

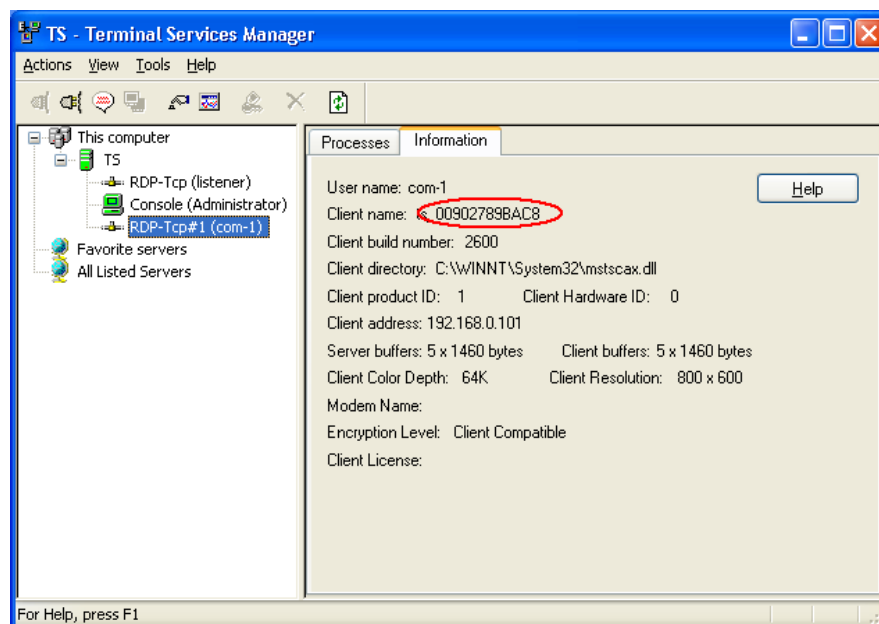
```
#SCREEN_RESOLUTION="800x600"  
SCREEN_RESOLUTION="1024x768"  
SCREEN_COLOR_DEPTH="16"  
SCREEN_HORIZSYNC="30-57"  
SCREEN_VERTREFRESH="56-60"
```

## User auto Login

Agar User dapat otomatis login ke Server pada Komputer yang telah ditentukan kita harus membuat file konfigurasi untuk masing Komputer berdasarkan MAC address masing-masing komputer.

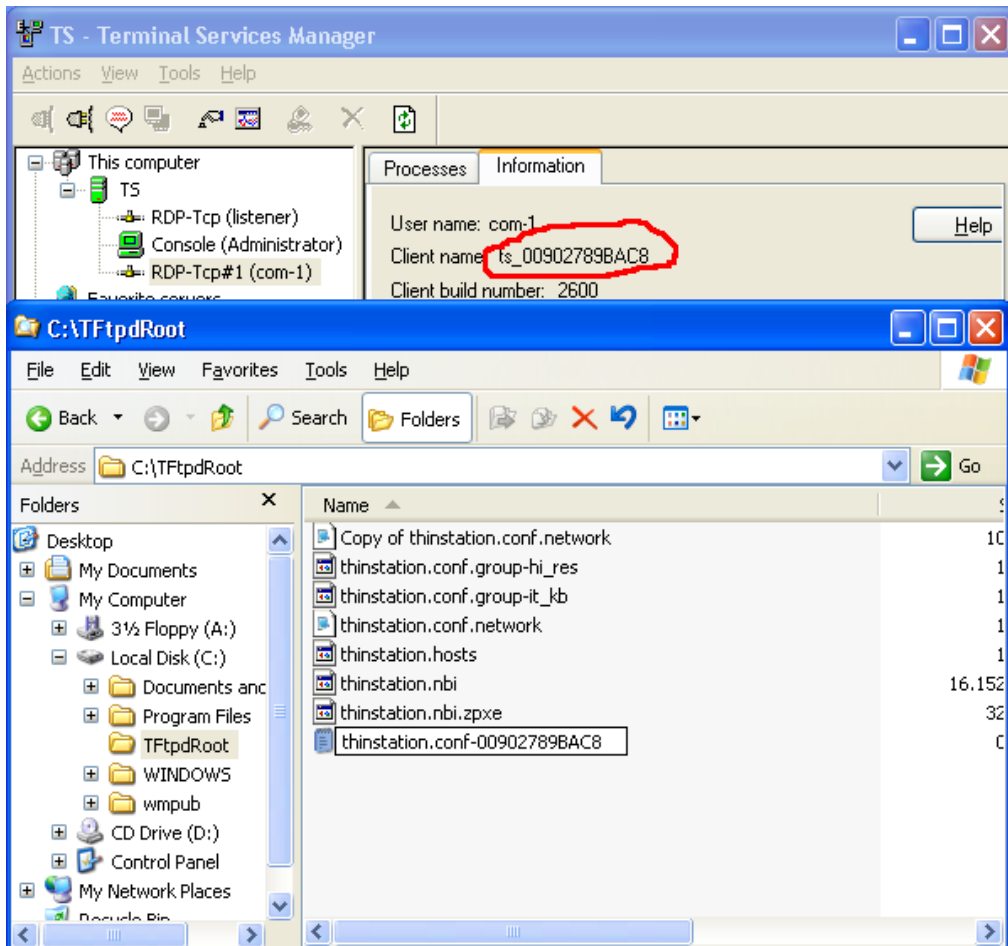
Ada 2 cara untuk mengetahui MAC address Komputer Client

1. Booting komputer client kemudian saat proses loading dhcp tekan tombol pause break untuk menghentikan proses booting, catat MAC address Client client.
2. Booting Komputer client kemudian login sebagai user misal com-1. Lihat MAC address client di Start → Administrative Tools → Terminal Services Manager



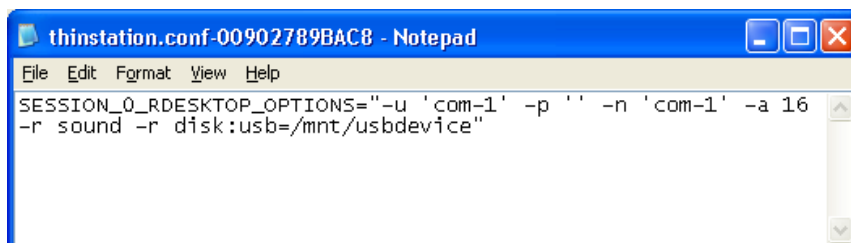
Setelah mengetahui MAC address client buat file configurasinya di folder [C:\TFtpdRoot](#)

Buka explorer → [C:\TFtpdRoot](#) → di jendela sebelah kanan klik kanan → New → Text document → beri nama thinstation.conf-<MAC>



Buka filenya dengan notepad kemudian isi dengan

```
SESSION_0_RDESKTOP_OPTIONS="-u 'com-1' -p '' -n 'com-1' -a 16 -r sound -r disk:usb=/mnt/usbdevice"
```

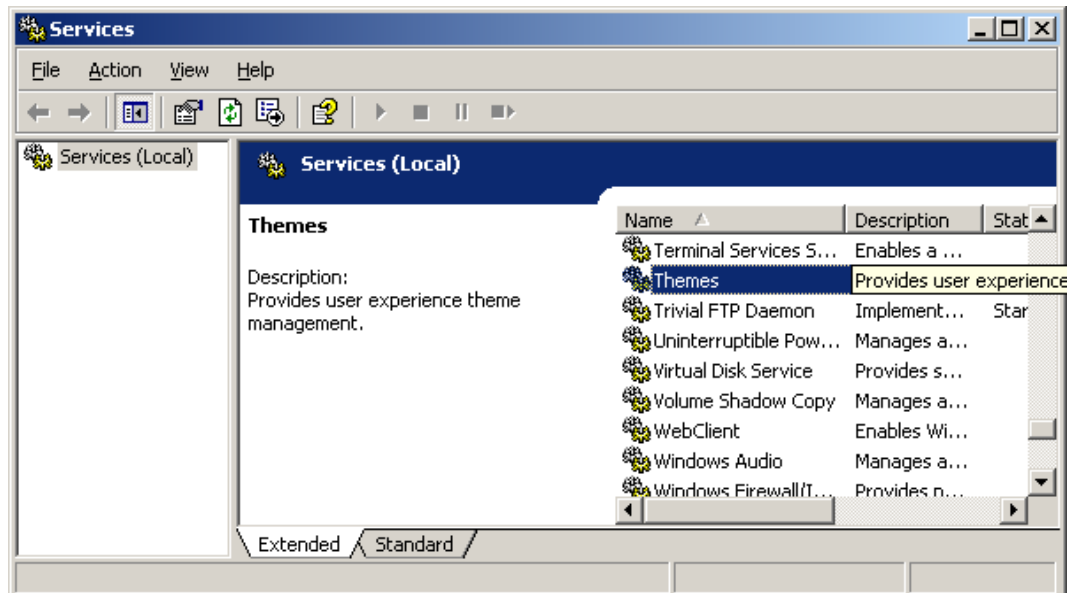


Simpan, kemudian reboot komputer client. Komputer client akan otomatis login sebagai user com-1

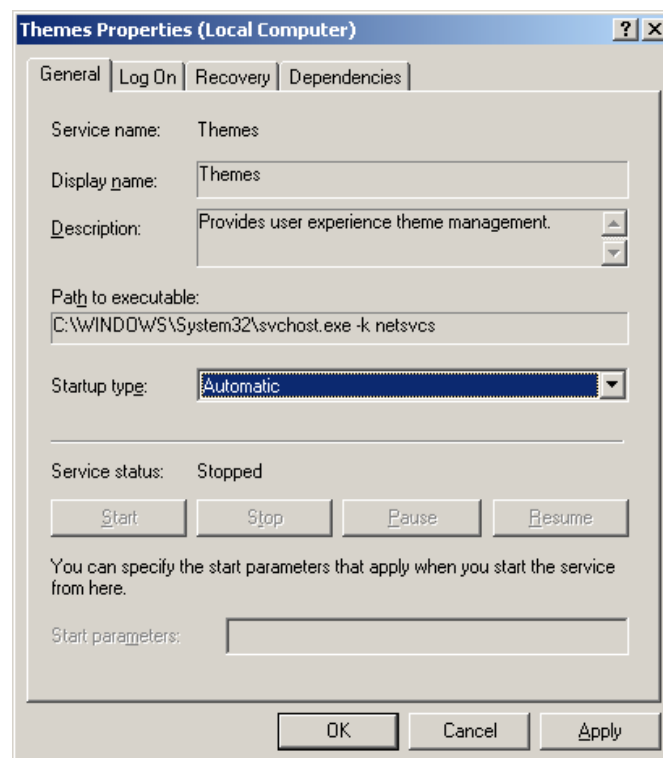
## Tampilan XP

Aktifkan Servis Themes, Klik Start → Administrative Tools → Services

Klik dua kali Themes

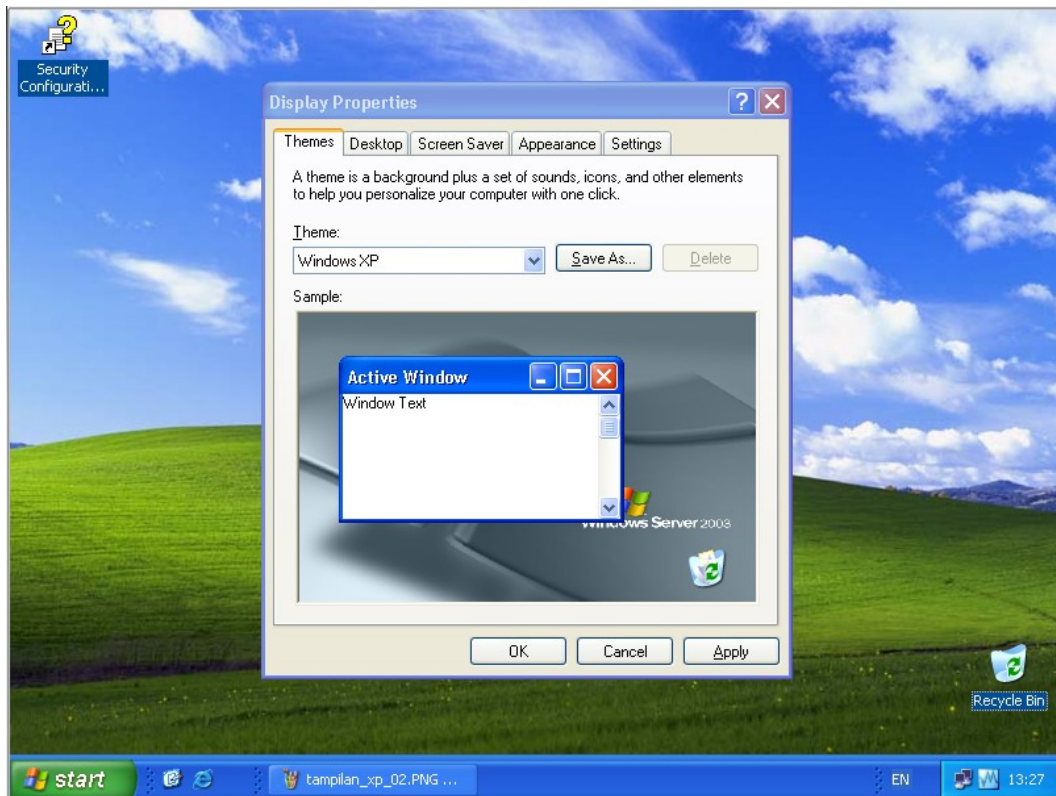


Set Startup type menjadi Automatic → Apply → Start → OK



Klik kanan Desktop → Properties

Ubah Theme menjadi Windows XP → OK



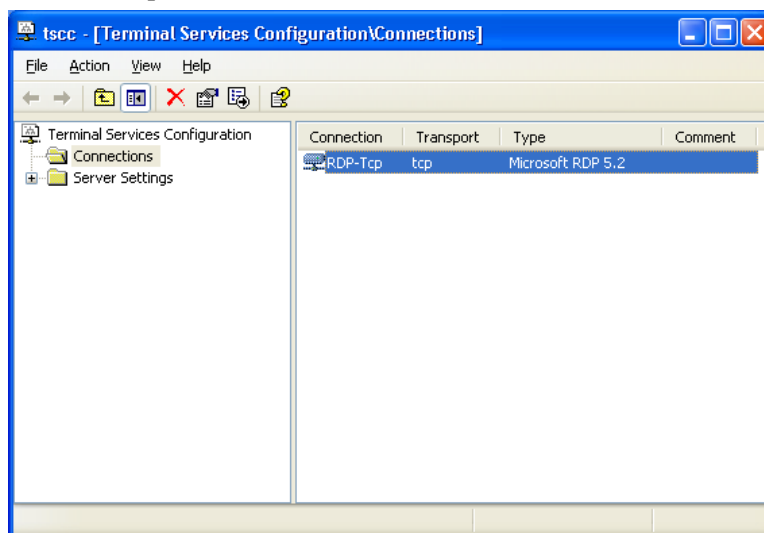
Ubah Theme untuk semua user supaya tampilan berubah menjadi XP :D

## Mengontrol User

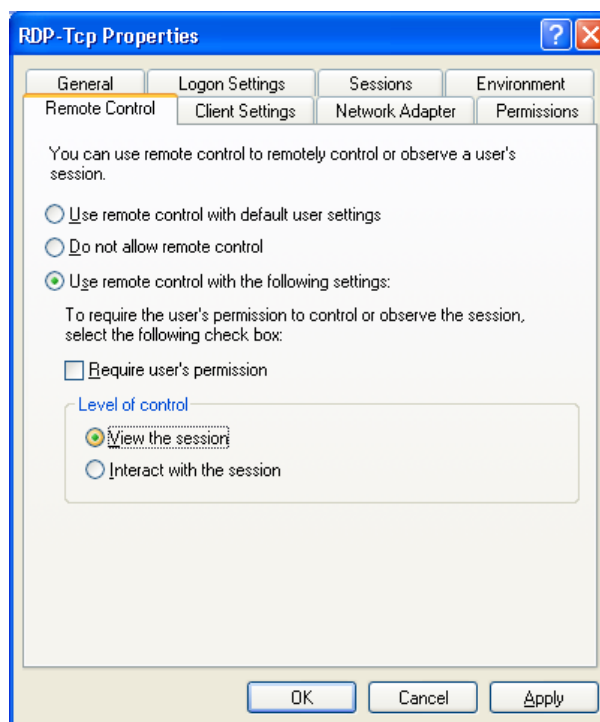
Aktifkan remote control dengan cara

Klik Start → Administrative Tools → Terminal Services Configuration

Klik dua kali RDP-Tcp

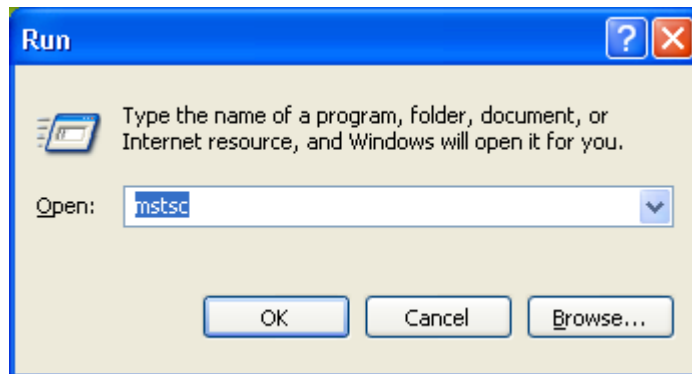


Klik tab Remote Control → Pilih “Use remote control with the following settings:” → Hilangkan Require user's permission → kemudian pilih “View the session” untuk melihat saja atau pilih “interact with the session” untuk mengontrol user → OK

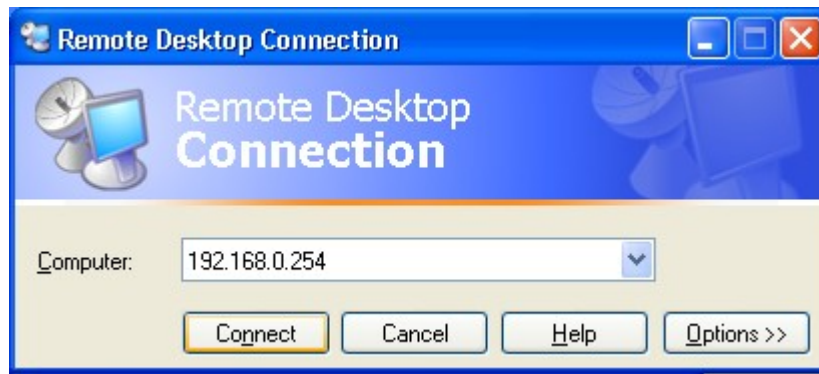


Remote control tidak bisa dilakukan lewat console session (session dimana user berinteraksi secara langsung dengan komputer server) tetapi harus melalui terminal server session jadi kita akan menngukan program mstsc untuk login ke server.

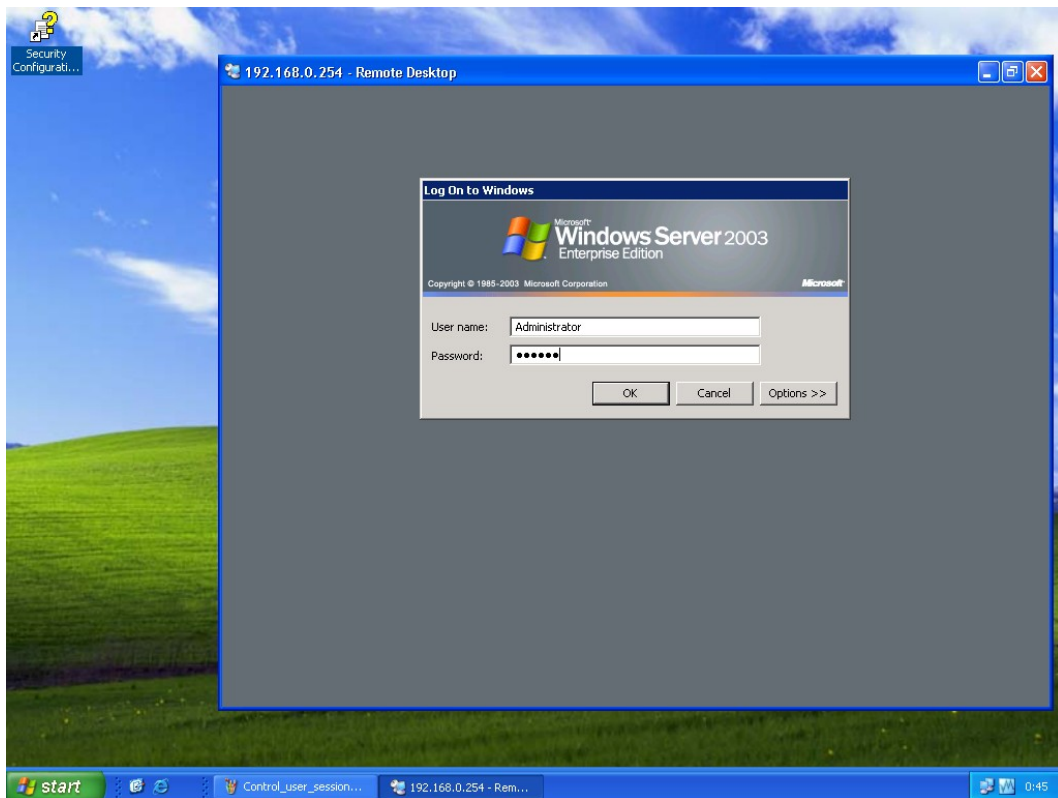
Klik Start → run → ketik mstsc → OK



masukkan ip address server → Connect

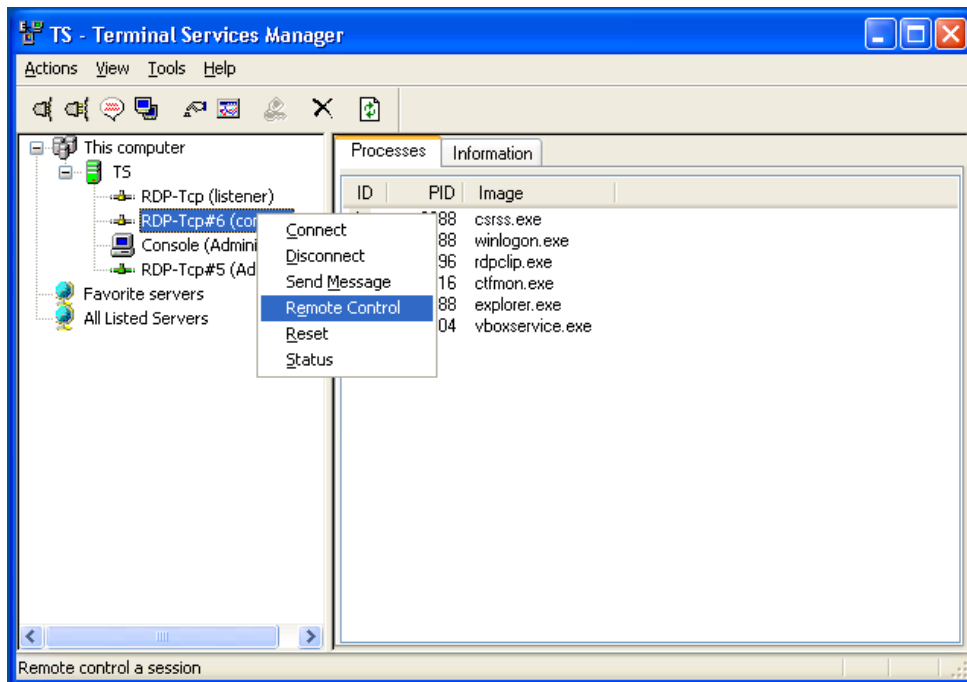


maka kita akan login lagi ke server, gunakan user administrator

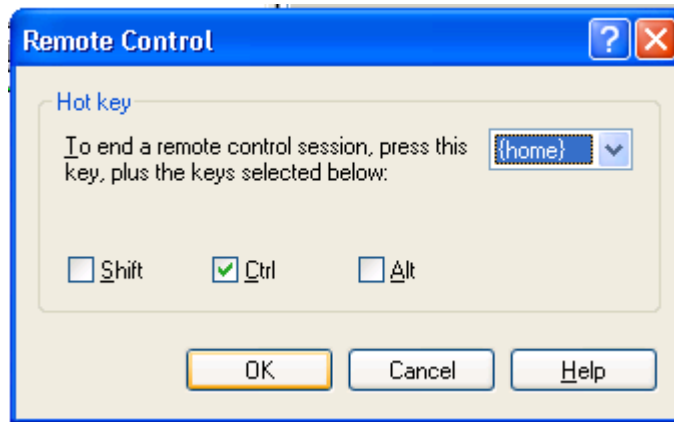


Klik Start → Administrative Tools → Terminal Services Manager

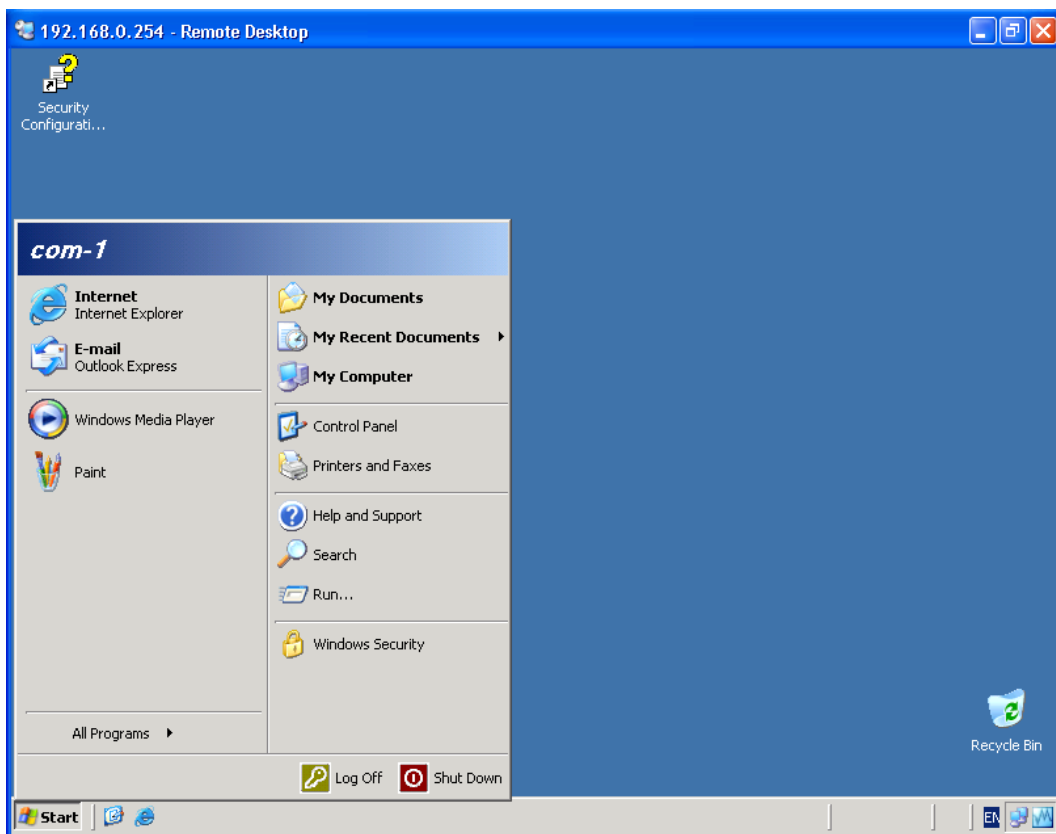
Klik kanan pada user yang aktif → Remote Control



Setting Hot key untuk keluar dari mode Remote Control (Jangan sampai lupa)



Jreng-jreng, Kita bisa melihat aktifitas user bahkan mengontrolnya :D



Untuk keluar dari mode Remote Control Tekan Hot key yang telah di setting sebelumnya.



## Mempercepat Booting THINSTATION

Untuk mempercepat booting komputer client kita harus mengkompil ulang thinstation dengan konfigurasi hardware yang telah kita tentukan, untuklah anda tidak harus menggunakan linux dan mengkompil dari terminal :D. Para developer (pembuat thinstation) telah menyediakan antar muka WEB untuk mengkompil thinstation salah satunya di alamat <http://www.thinstation.net/TSoM/index.php>

Sebelumnya anda harus mencatat spesifikasi hardware dari komputer client anda. Yang perlu di catat Ethernet, VGA dan Sound Card.

Disini saya akan mencatat spesifikasi komputer yang ada diwarnet saya :D<a href="http://www.thinstation.net/TSoM/index.php">:: ThinStation - a light, full-featured thin client OS ::</a>

Compaq Deskpro P2

- Ethernet intel eeopro
- VGA ati
- Sound ES1869

Dell Optiplex p2

- ethernet 3com 3c59x
- VGA ati
- ISA Sound Blaster 16

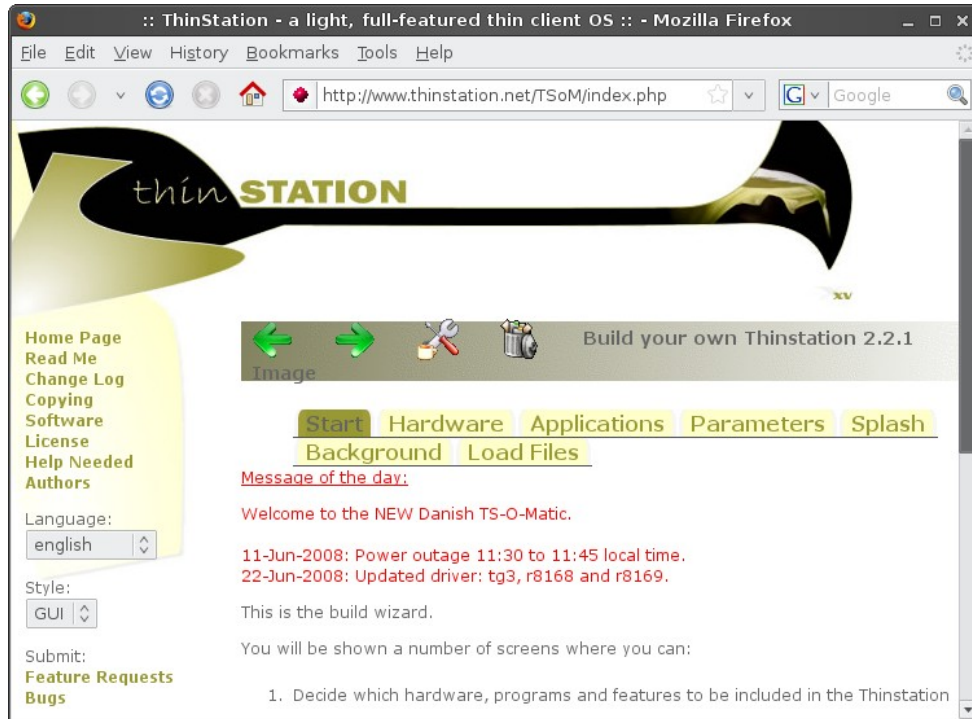
Dell Optiplex p3

- ethernet 3com
- VGA intel 810
- Sound Ensonic 1371

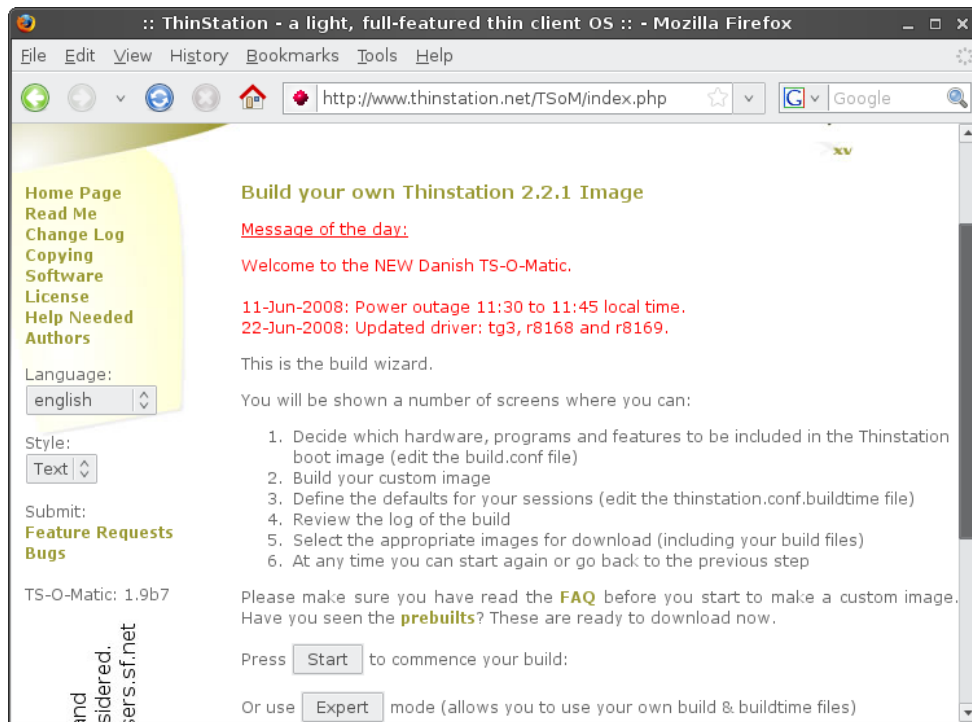
Rakitan

- ethernet intel eeopro
- VGA intel 810
- Sound onboard

Setelah anda mencatat semua spesifikasi Hardware Client buka alamat <http://www.thinstation.net/TSoM/index.php>

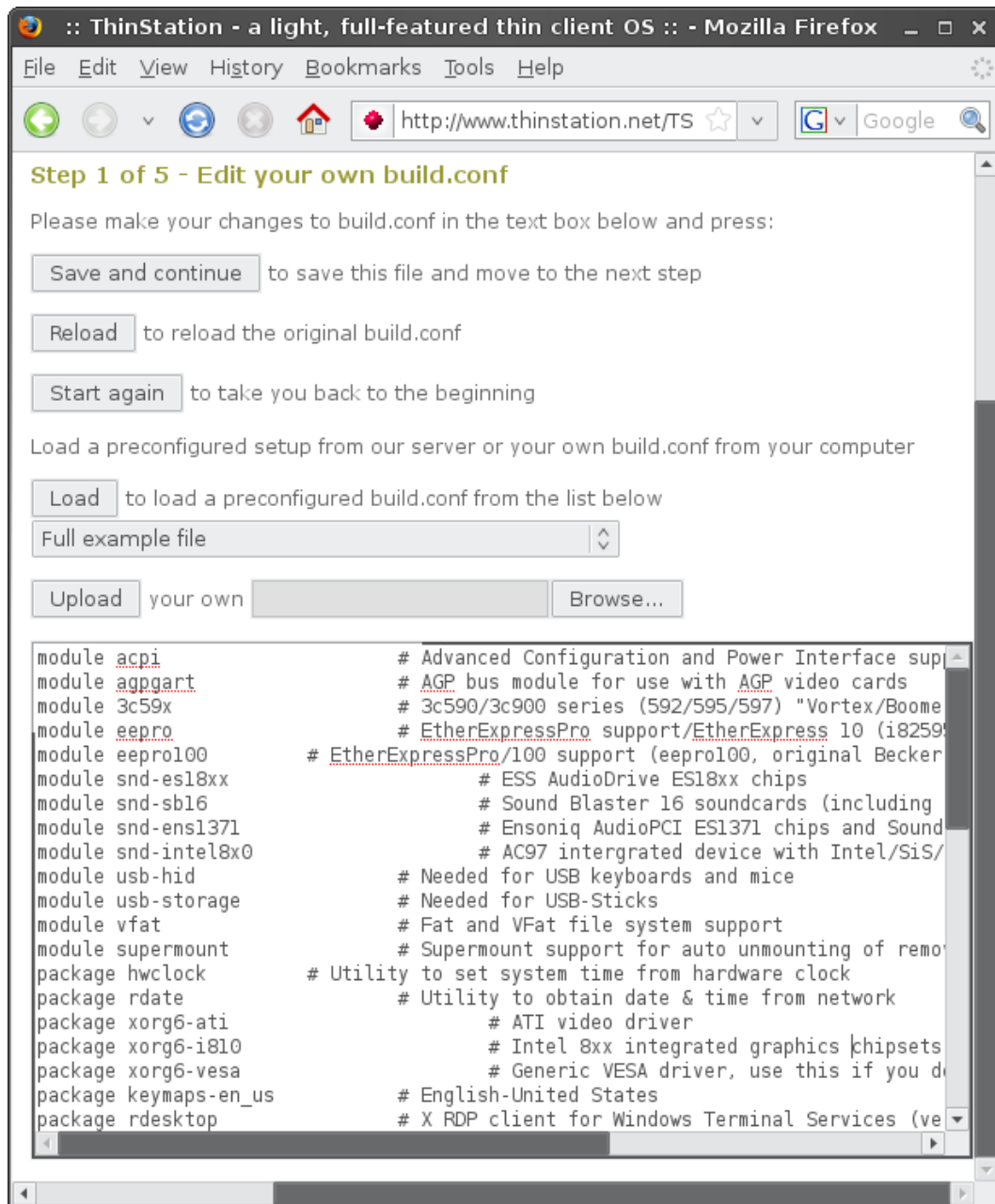


Ganti Style dengan Text (Kebiasaan pakai Text/kalau mau mode GUI silahkan) → Press Start



Edit build.conf sesuai dengan spesifikasi hardware yang telah dicatat sebelumnya.  
Yang bertanda # saya hapus.

Setelah selesai mengedit Klik Save and continue



## **build.conf**

module acpi

```
module agpgart
module 3c59x
module eeepro
module eeepro100
module snd-es18xx
module snd-sb16
module snd-ens1371
module snd-intel8x0
module usb-hid # Needed for USB keyboards and mice
module usb-storage # Needed for USB-Sticks
module vfat # Fat and VFat file system support
module supermount
package hwclock
package rdate
package xorg6-ati
package xorg6-i810
package xorg6-vesa # Generic VESA driver
package keymaps-en_us
package rdesktop

#!Parameters
param rootpasswd neutron
param xorgvncpasswd neutron
param storagepasswd neutron
param dialuppasswd neutron
param sambapasswd neutron
param bootlogo true
param bootresolution 800x600
param defaultconfig thinstation.conf.buildtime

param basename thinstation
param basepath .
```

```
param localpkgs    false
param fulllocales  false
param icaencryption false
param bootverbosity 3
```

```
##!!Advanced
```

```
# Leave this alone unless you can't download (wget required on your
Linux box):
```

```
param icaurl
http://download2.citrix.com/FILES/en/products/Linux10/en.linuxx86.ta
r.gz
```

```
param flashurl
http://fpdownload.macromedia.com/get/flashplayer/current/install fla
sh_player_9_linux.tar.gz
```

```
param nxurl http://thinstation.org/download/2.3/nxclient-3.x-
current.i386.tar.gz
```

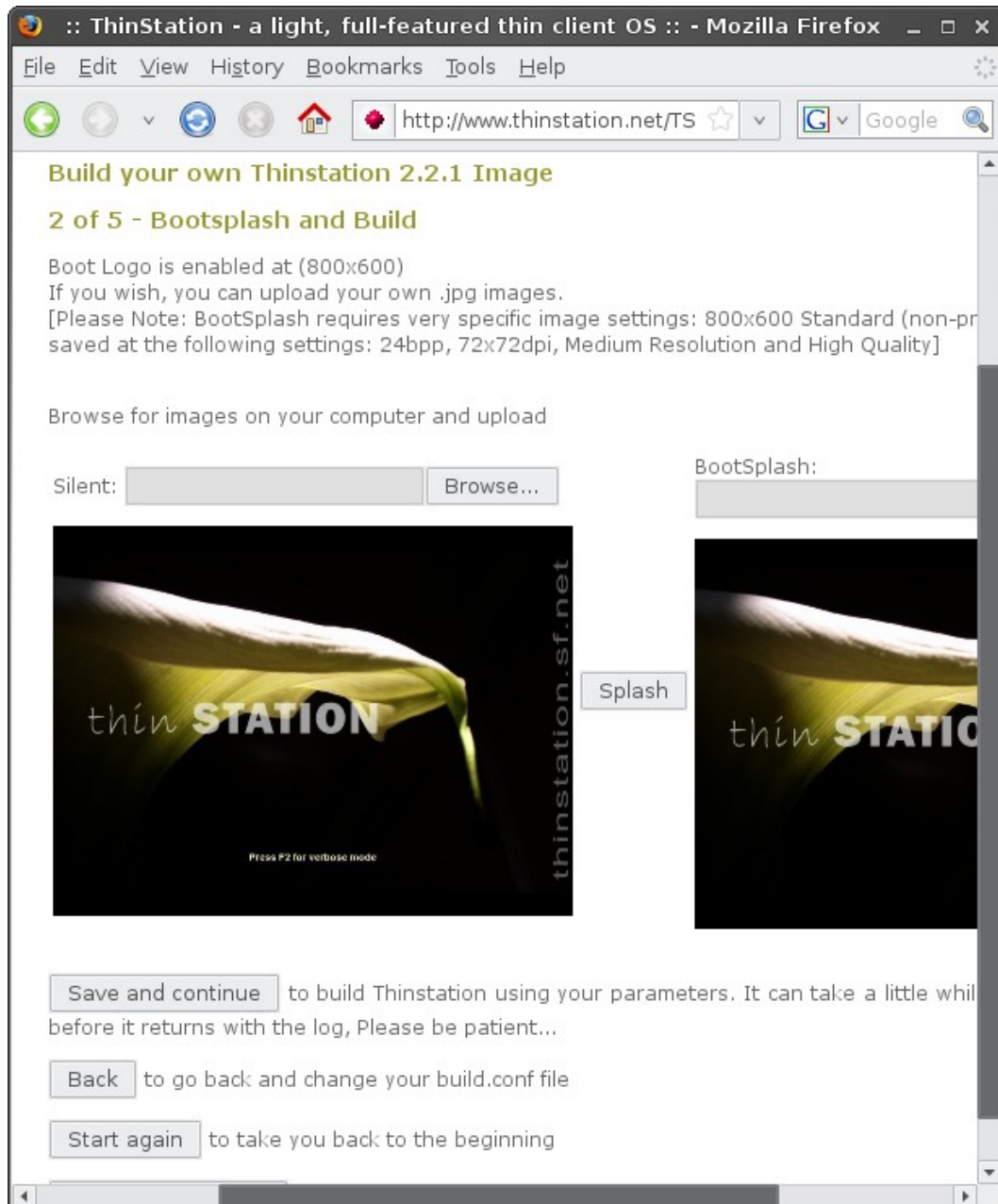
```
param 2xurl
http://downloads.2x.com/applicationserver/2xApplicationServerClient3
.tar.bz2
```

```
param javaurll file://home/installs/jre-1_5_0_06-linux-i586.bin
```

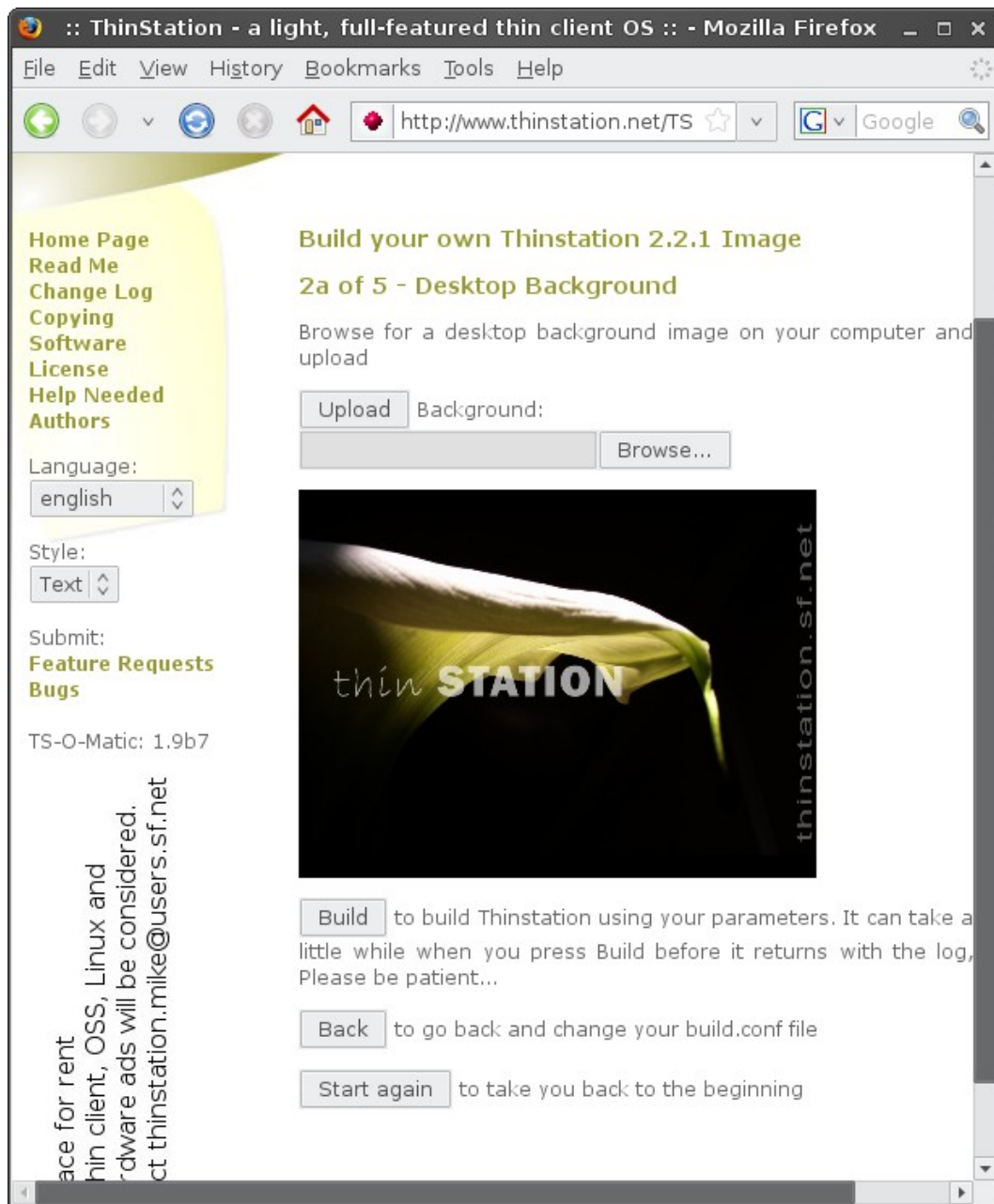
```
param tarantellaurll file://home/installs/tnci3li.tar
```

Setting tampilan waktu booting → Klik Save and continue

Jika ingin mengganti siapkan gambar jpg dengan resolusi 800x600 sesuai dengan konfigurasi di build.conf. Browse file di bagian Silent: dan BootSplash kemudian Klik Splash → tunggu Hingga gambar selesai diupload → baru klik Save and continue



Tidak perlu di ganti langsung Klik Build





Edit thinstation.conf.buildtime Edit seperti contoh dibawah kemudian Klik Save and continue.

**Step 3 of 5 - Edit your own thinstation.conf.buildtime**

include these settings as defaults in your build (thinstation.conf.buildtime)

save these settings as thinstation.conf.example for downloading

Please make your changes to thinstation.conf.buildtime in the text box below and press

to save these files and move to the next step

to load a preconfigured thinstation.conf.buildtime from the list below

Full example file

your own

to reload the original thinstation.conf.buildtime

to go back and change your build.conf file

to take you back to the beginning

```
#AUTOPLAYCD=0n
CUSTOM_CONFIG=0ff
RECONNECT_PROMPT=0n

SCREEN=0
WORKSPACE=1
AUTOSTART=0n
ICONMODE=AUTO

SESSION_0_TITLE="Windows 2003 terminal server"
SESSION_0_TYPE=rdesktop
SESSION_0_RDESKTOP_SERVER=192.168.0.254
SESSION_0_RDESKTOP_OPTIONS="-u '' -a 16 -r sound -r disk:usb=/mnt/usbdevice"
SESSION_0_AUTOSTART=0N

SCREEN_RESOLUTION="1024x768 | 800x600 | 640x480 | *"
SCREEN_COLOR_DEPTH="24 | 16 | 8 | *
```

**thinstation.conf.buildtime**

```
AUDIO_LEVEL=67
KEYBOARD_MAP=en_us
TIME_ZONE="UTC-12:30"
SYSLOG_SERVER=local
USB_ENABLED=On
#USB_STORAGE_SYNC=On
#USB_MOUNT_OPTIONS="utf8,shortname=win95"
DAILY_REBOOT=On
#AUTOPLAYCD=On
CUSTOM_CONFIG=Off
RECONNECT_PROMPT=On

SCREEN=0
WORKSPACE=1
AUTOSTART=On
ICONMODE=AUTO

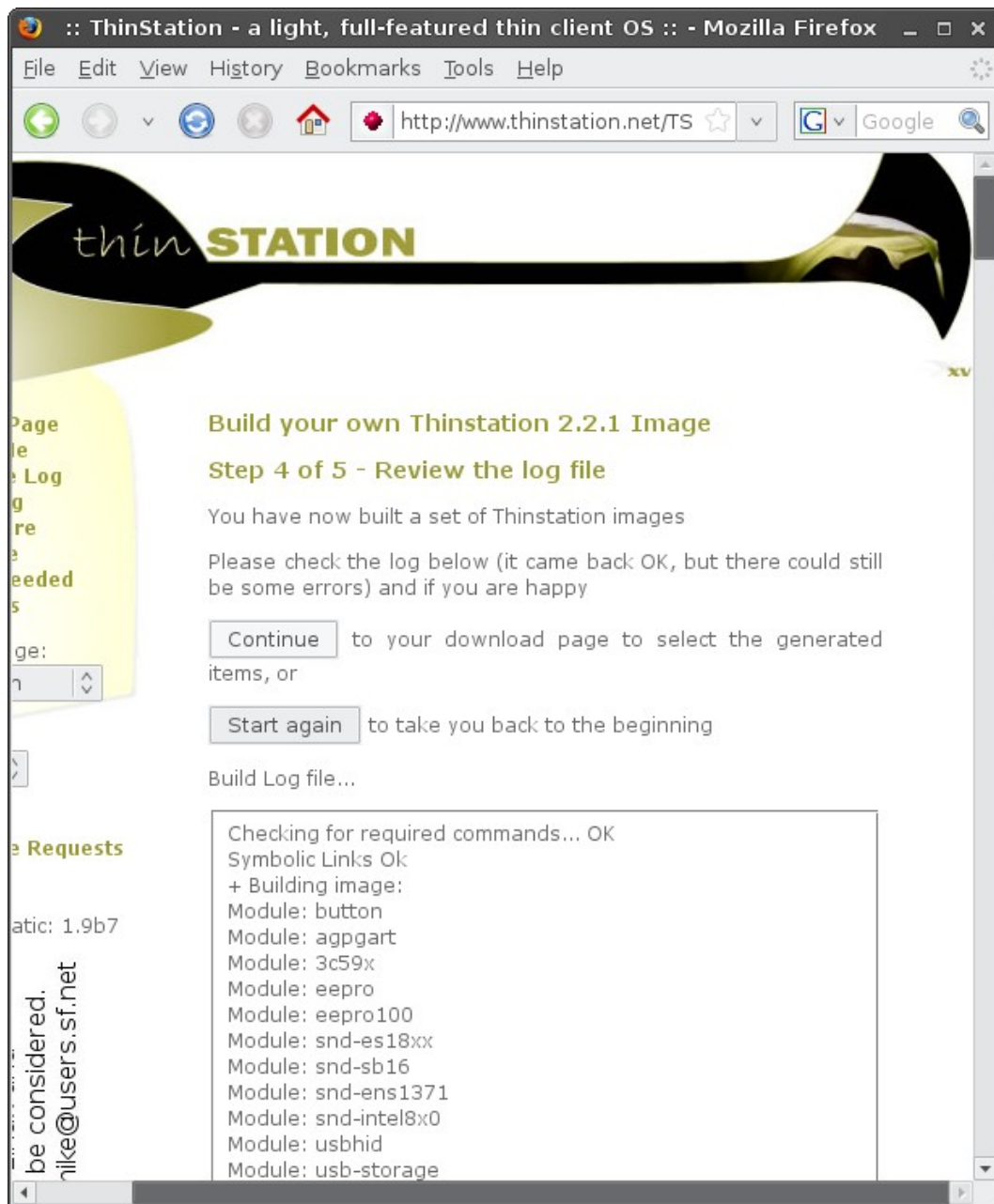
SESSION_0_TITLE="Windows 2003 terminal server"
SESSION_0_TYPE=rdesktop
SESSION_0_RDESKTOP_SERVER=192.168.0.254
SESSION_0_RDESKTOP_OPTIONS="-u " -a 16 -r sound -r disk:usb=/mnt/usbdevice"
SESSION_0_AUTOSTART=ON

SCREEN_RESOLUTION="800x600"
SCREEN_COLOR_DEPTH="16"
SCREEN_HORIZSYNC="30-57"
SCREEN_VERTREFRESH="56-60"
SCREEN_BLANK_TIME=10
SCREEN_STANDBY_TIME=20
SCREEN_SUSPEND_TIME=30
```

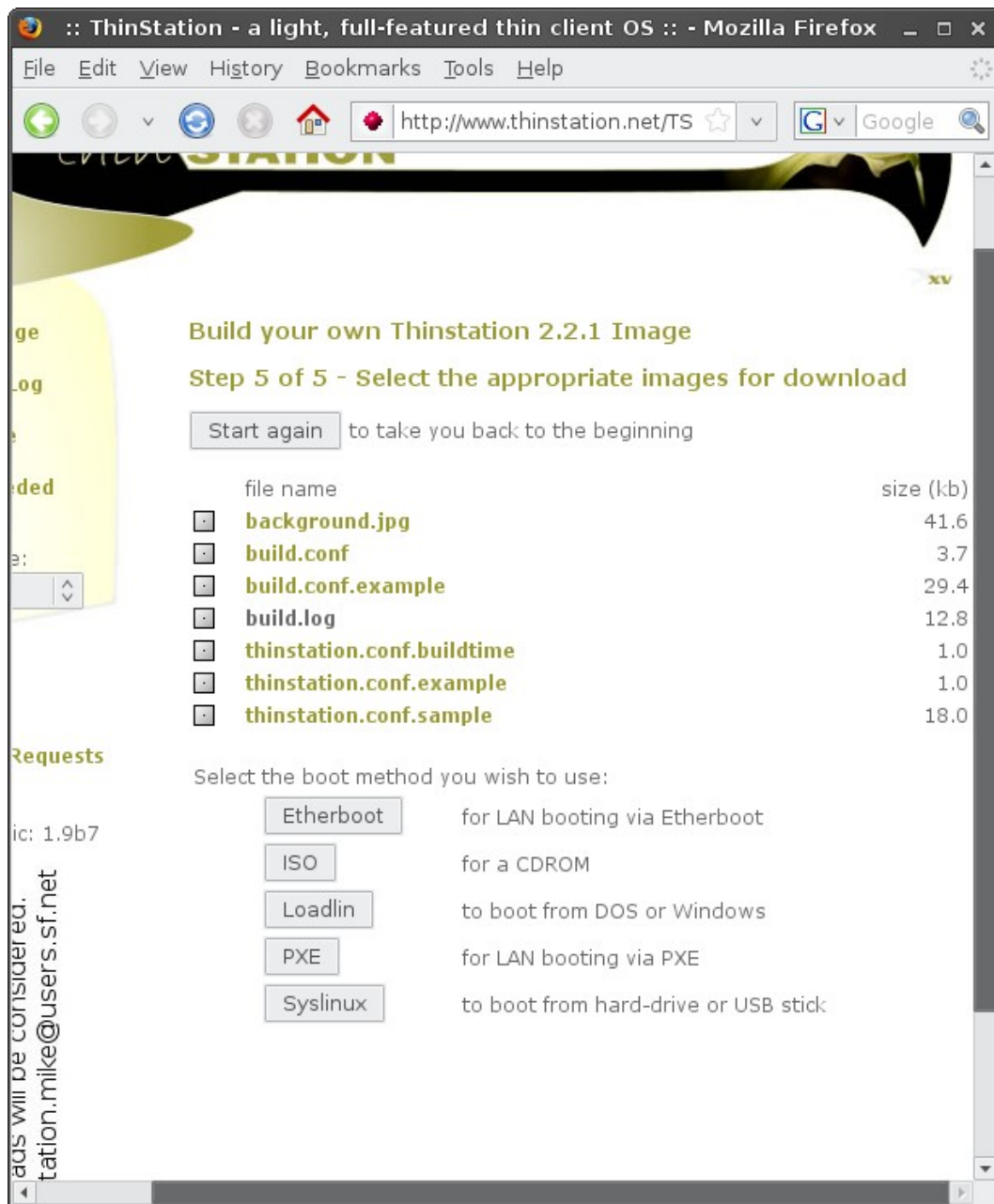
SCREEN\_OFF\_TIME=60  
MOUSE\_RESOLUTION=100  
X\_COOKIE=36d71ab65c10ef065702c111a3d31593  
X\_DRIVER\_OPTION1="swcursor On"

NET\_HOSTNAME=ts\_\*  
NET\_TELNETD\_ENABLED=On  
NET\_REMOTE\_ACCESS\_FROM="192.168.0.0"

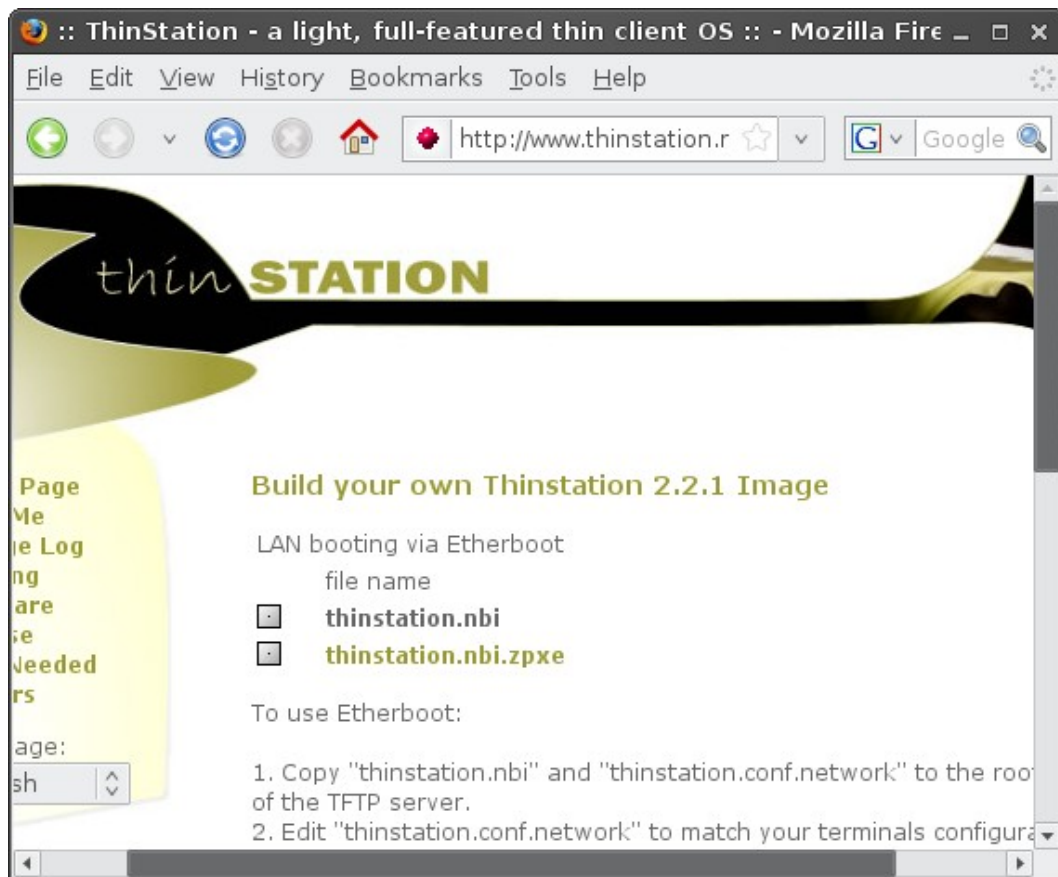
Klik Continue



thinstation image siap di download. Klik Etherboot



Download thinstation.nbi



Setelah selesai download pindahkan file thinstation.nbi yang baru ke folder [C:\TFTPdRoot](#) hapus thinstation.nbi yang lama. Restart TFTP Server di Start → Administrative Tools → Services . Boot Komputer Client dan rasakan bedanya :D

## Penutup

Dengan THINSTATION kita dapat memanfaatkan komputer lama menjadi berguna kembali, Terima Kasih kepada Developer-developer Thinstation :

**Miles Roper** [mroper AT users.sourceforge.net]

Developer

*Miles Roper was born in 1973, works for the [Public health system](#) in New Zealand. He specialises in Unix, Networking and Database development. He is recently married. His interests are gardening, computing and Linux.*

**Paolo Salvan** [psalvan AT users.sourceforge.net]

Web-site, howto, pre-built images, beta testing

*Paolo Salvan was born in 1977, works professionally as a developer and thin-client consultant at [XVision](#), Italy.*

**Mike Eriksen** [km\_eriksen AT users.sourceforge.net]

Faq Maintainer, beta testing

*Mike Eriksen was born in 1964 and is working at Department of Chemistry, [Technical University of Denmark](#), Denmark. He works with catalysis and IT infrastructure at the department.*

**Trevor Batley** [trevorbatley AT users.sourceforge.net]

Developer, TS-O-matic author

*Trevor Batley is the 'old fella' of this crew, and is an IT Consultant with a large multi-national firm and is based in **Australia**. Currently he is helping clients integrate Linux and Open Source Software into their environments. He has 4 children with whom he spends most of his time. He enjoys hiking and snow skiing (when he can).*

Dan masih banyak lagi yang lain :D

Kritik, saran dan pertanyaan silahkan hubungi Iwan Setiawan

email : [iwan\\_it04@yahoo.com](mailto:iwan_it04@yahoo.com)

blog : <http://iwansetiawan.wordpress.com>

## Referensi

Thinstation Documentation

<http://thinstation.sourceforge.net/wiki/index.php/ThDocs>

